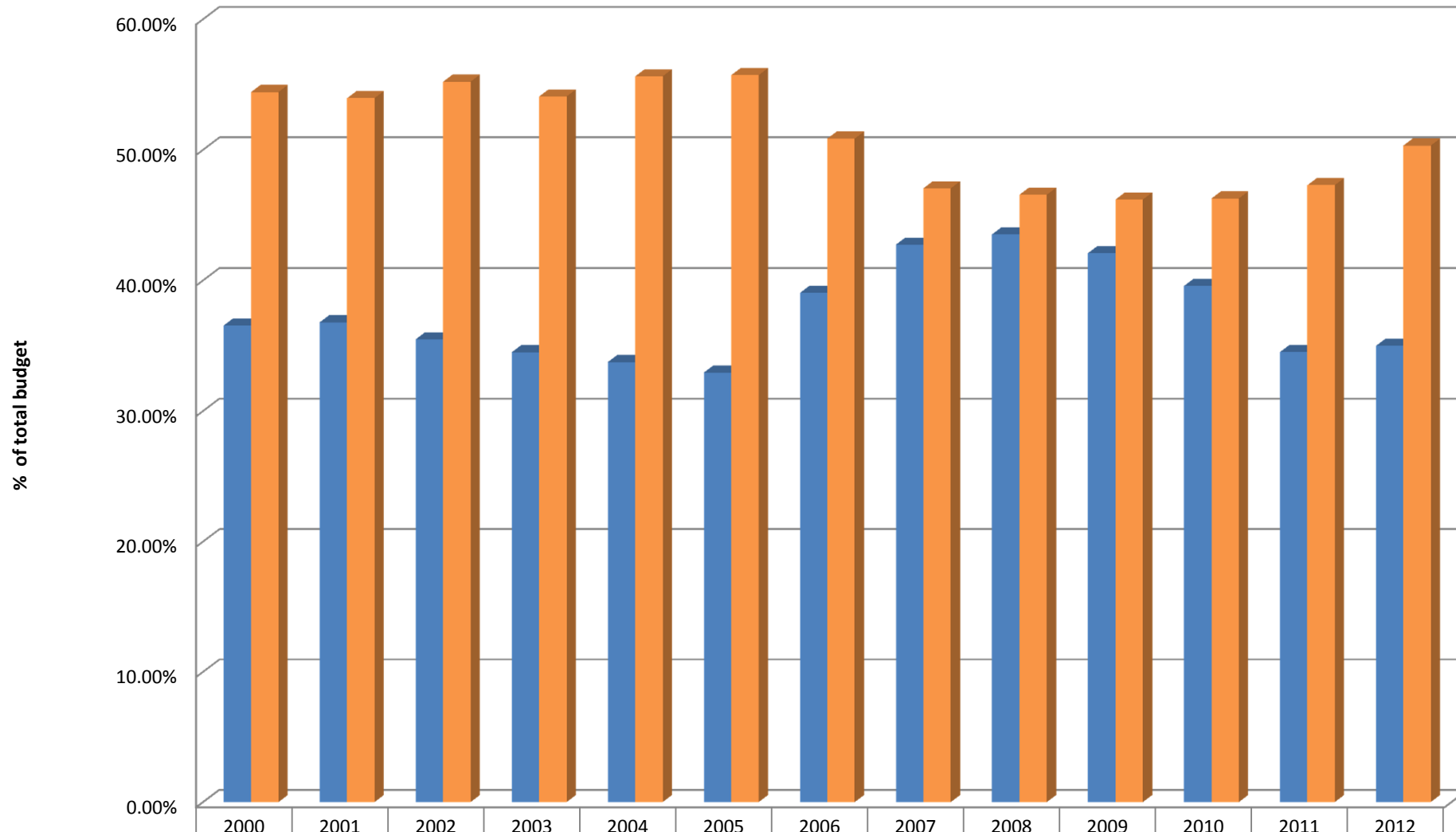


Funds as % of Total Budget



■ State % of Budget	2000	2001	2002	2003	2004	2005	2006	2007	2008	2009	2010	2011	2012
■ Town % of Budget	36.55%	36.79%	35.49%	34.50%	33.75%	32.94%	39.04%	42.74%	43.52%	42.09%	39.58%	34.51%	34.99%
	54.42%	53.96%	55.22%	54.09%	55.63%	55.72%	50.86%	47.05%	46.56%	46.19%	46.27%	47.29%	50.32%