

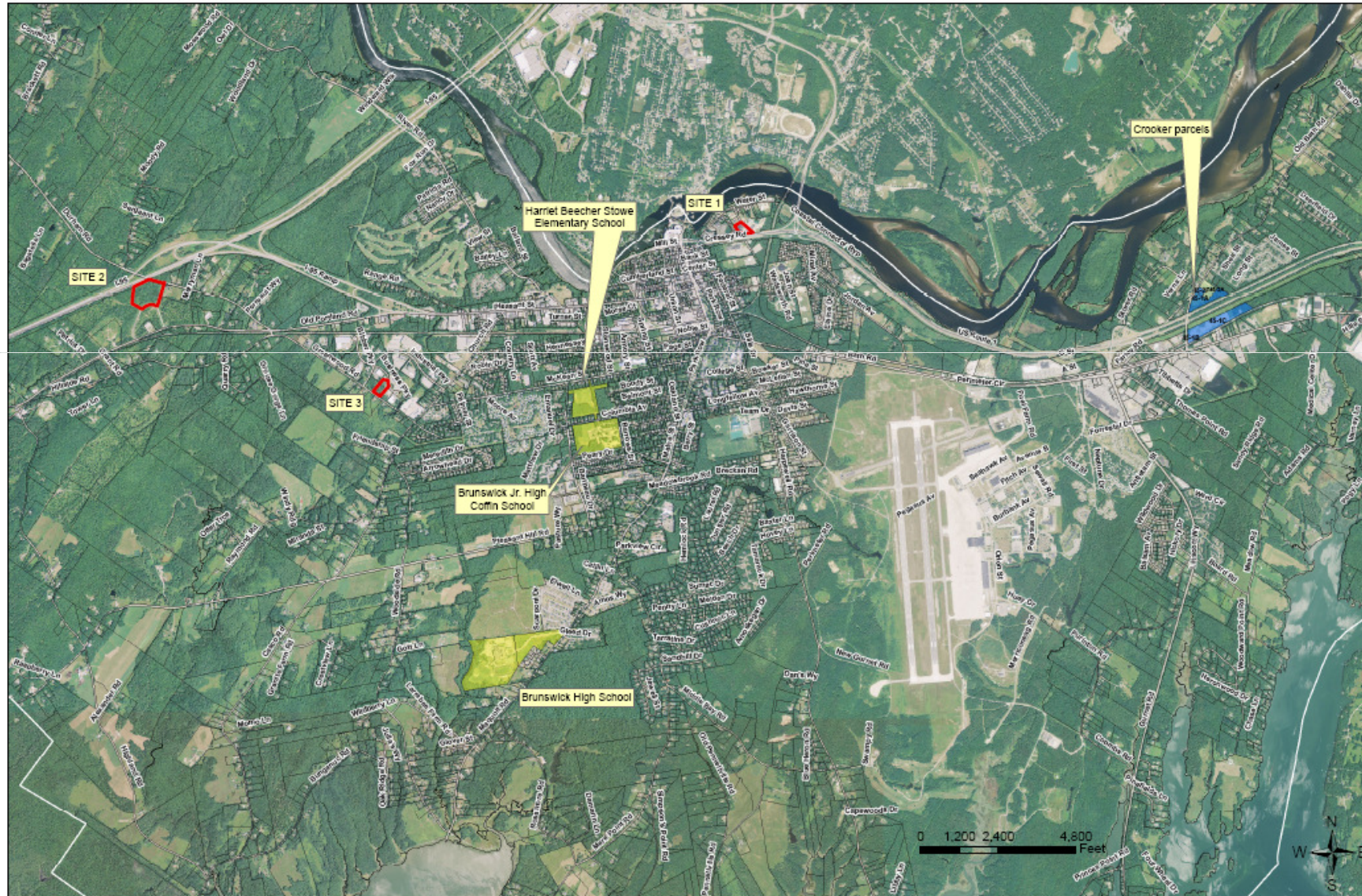
Architecture ■ Interior Design ■ Planning



ARCHITECTS

Brunswick Master Plan Study

■ Bus Garage Sites

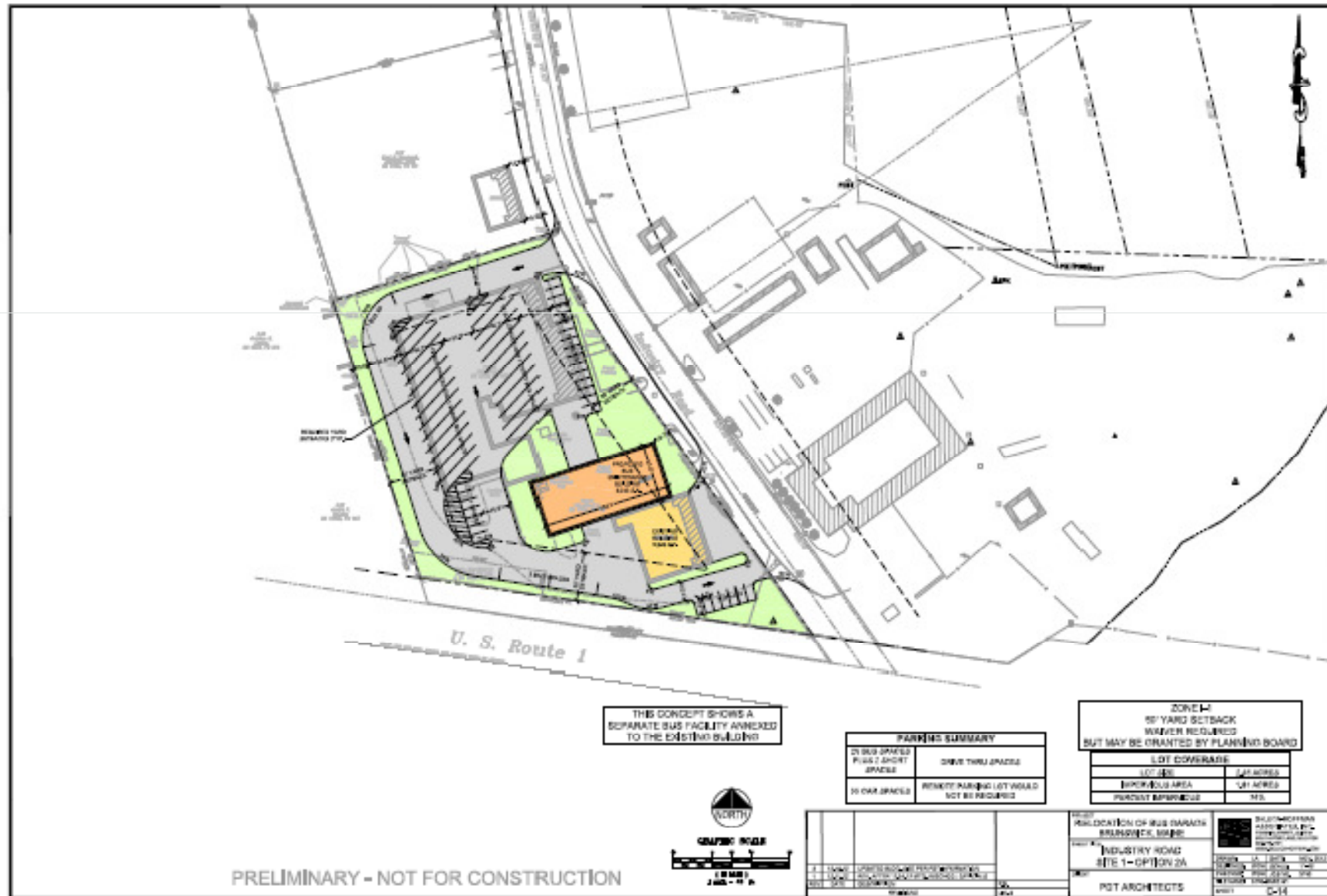


Brunswick Master Plan Study

■ Brunswick Industrial Park

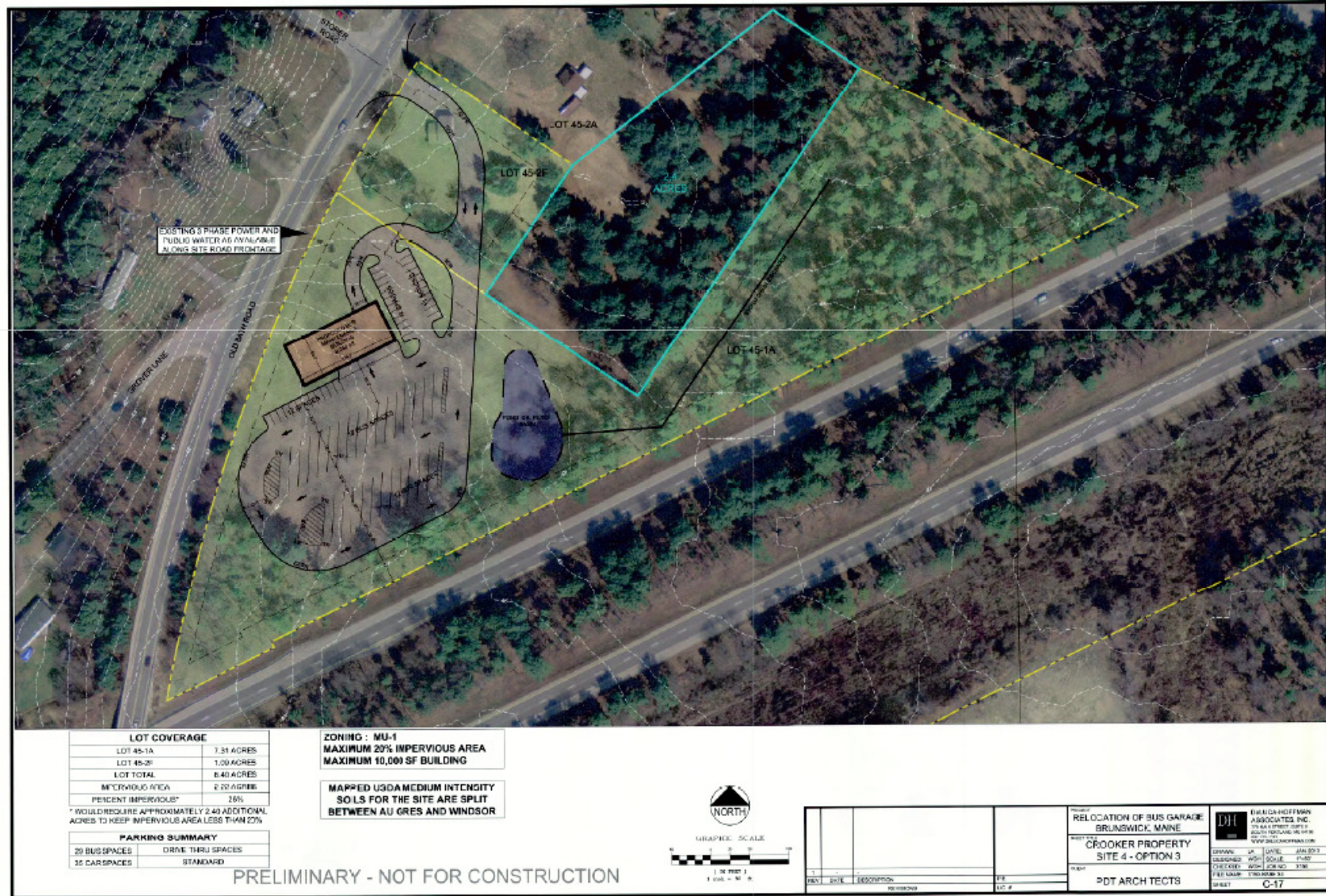


- Times Record Site



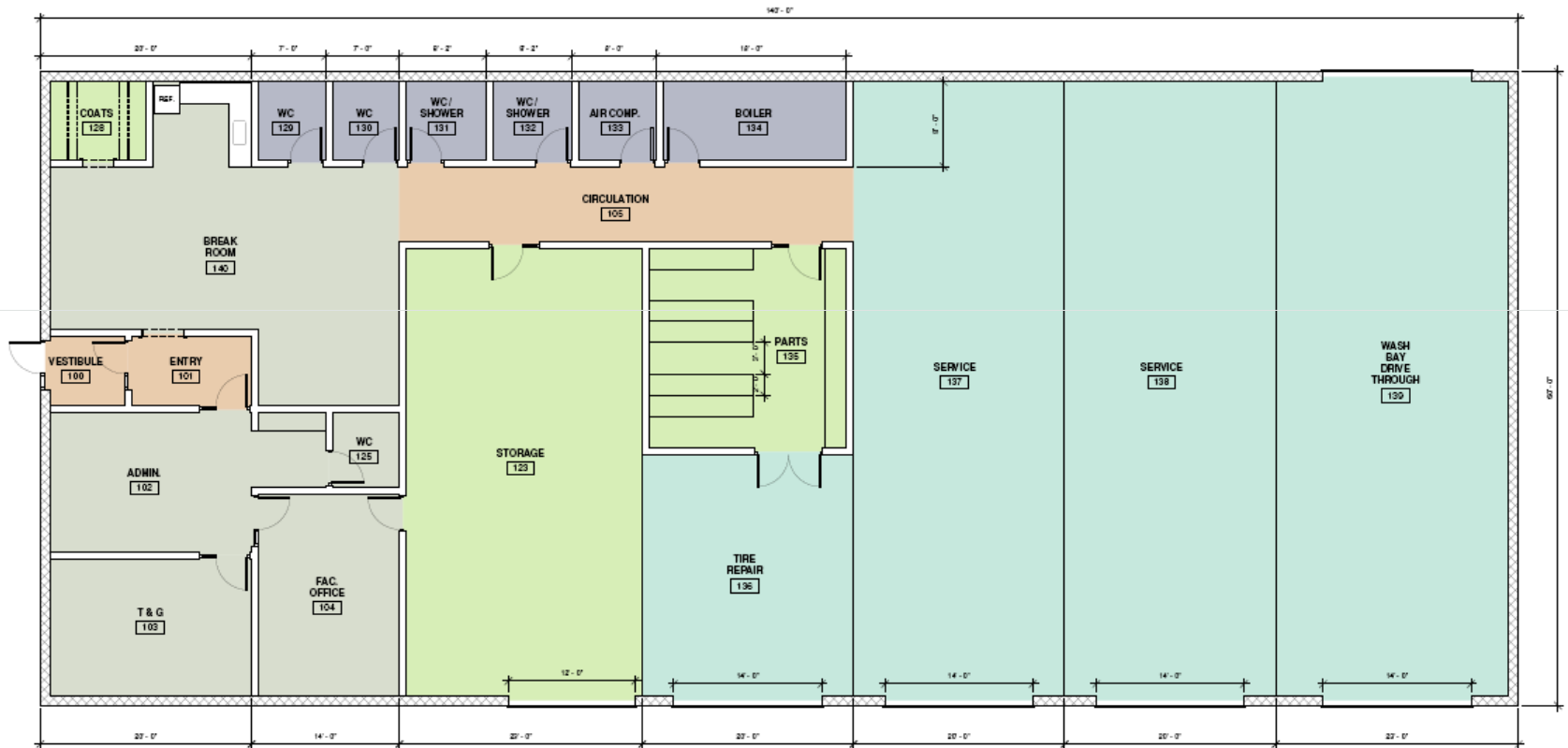
Brunswick Master Plan Study

■ Crooker Parcel



Brunswick Master Plan Study

■ Bus Garage



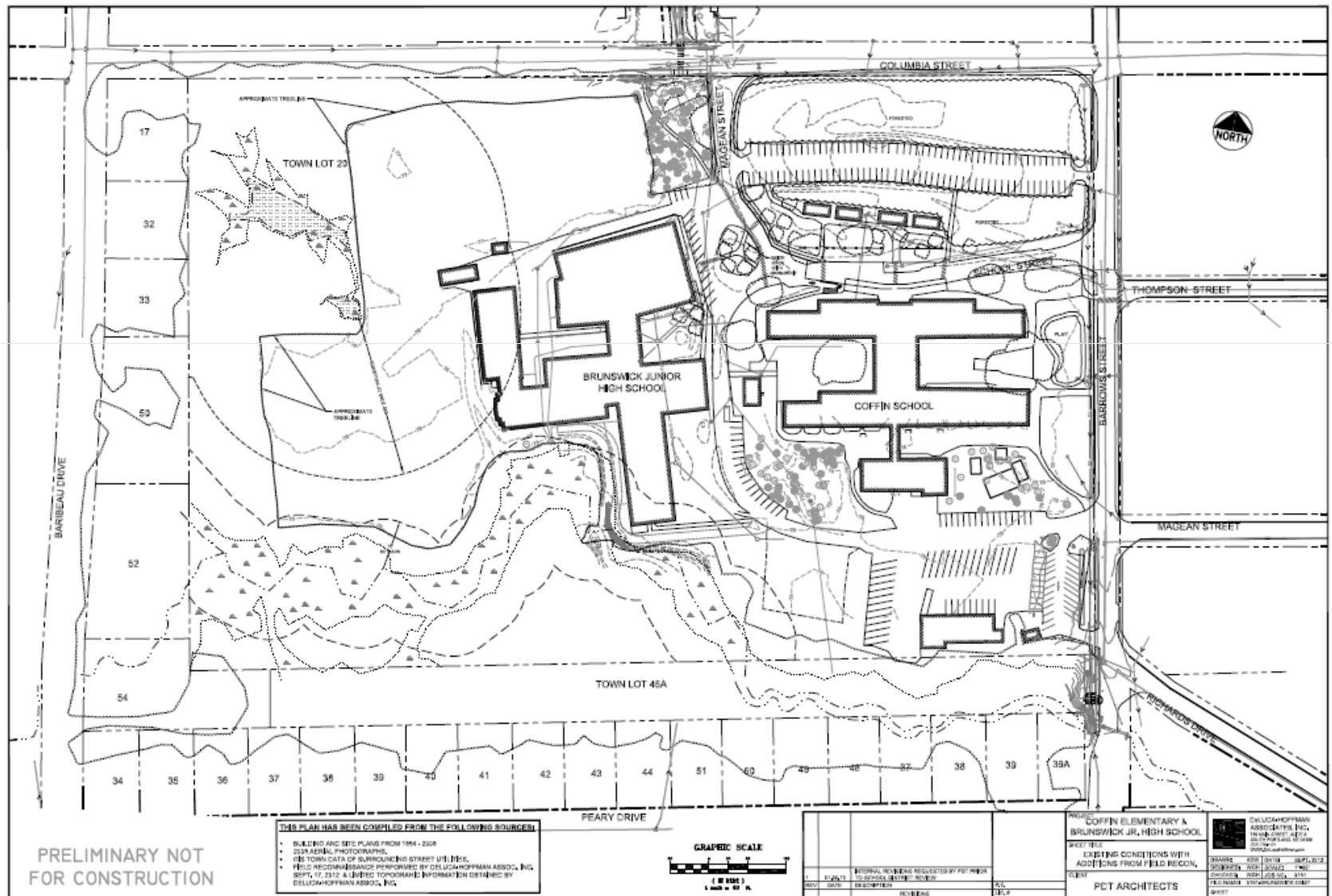
Brunswick Master Plan Study

■ Site Matrix and Building Costs for Bus Garage

	SITE #1 TIMES RECORD SITE	SITE #2 BRUNSWICK INDUSTRIAL PARK	SITE #3 CROOKER @ OLD BATH ROAD
Site Development Costs	\$639,574	\$804,547	\$886,792
Building Cost	\$1,310,400	\$1,310,400	\$1,310,400
Project Soft Costs	\$553,947	\$553,947	\$553,947
Land Purchase	\$0	\$295,000	\$595,000
TOTAL	\$2,503,921	\$2,963,894	\$3,346,139
Distance to Centroid	1.5 miles	1.3 miles	3.6 miles
Site Size	2.45 acres	2.92 acres	8.4 acres

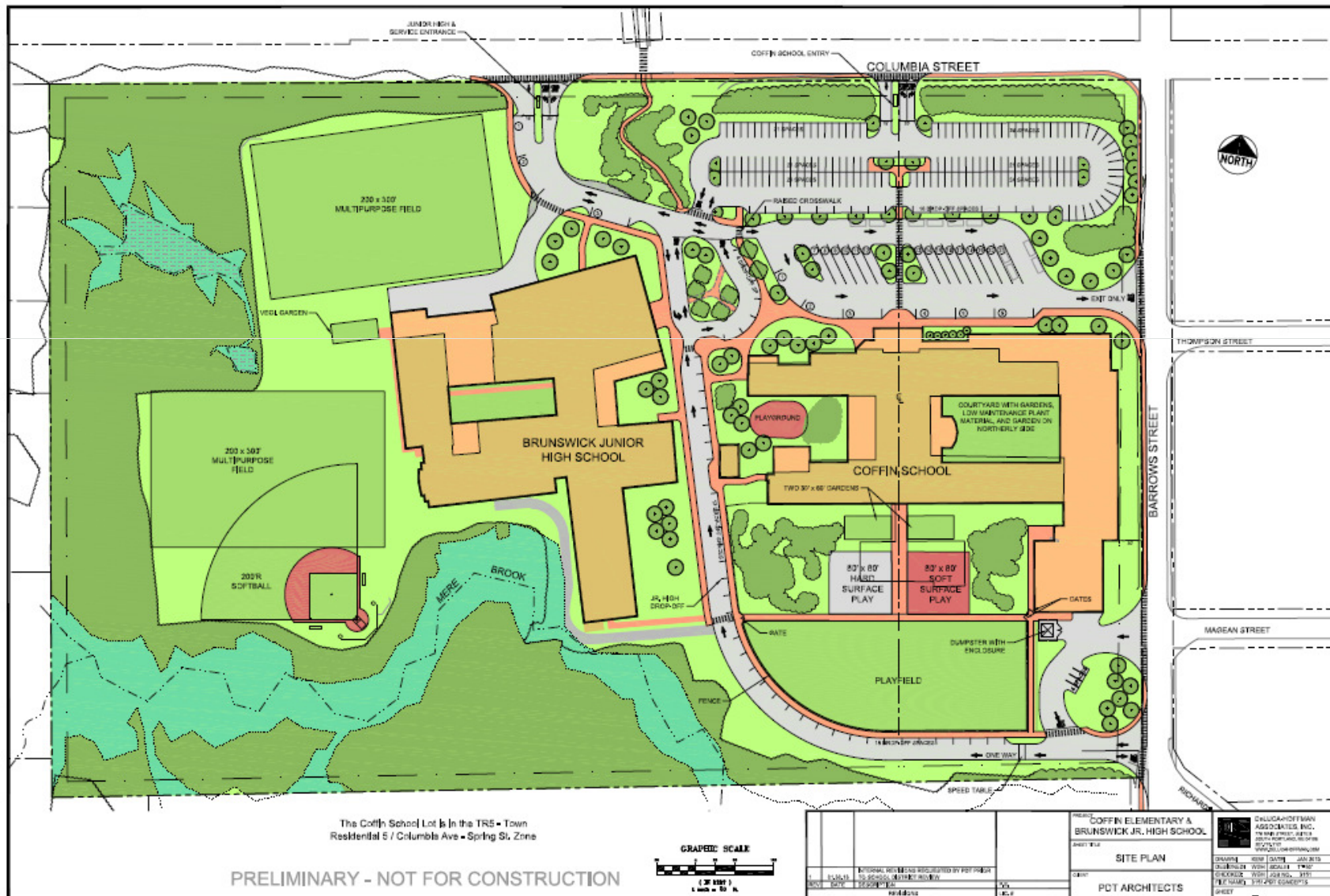
Brunswick Master Plan Study

■ Existing Campus Site Plan



Brunswick Master Plan Study

■ Proposed Campus Site Plan



Brunswick Master Plan Study

- Coffin Interior Courtyard Perspective Looking Towards Addition

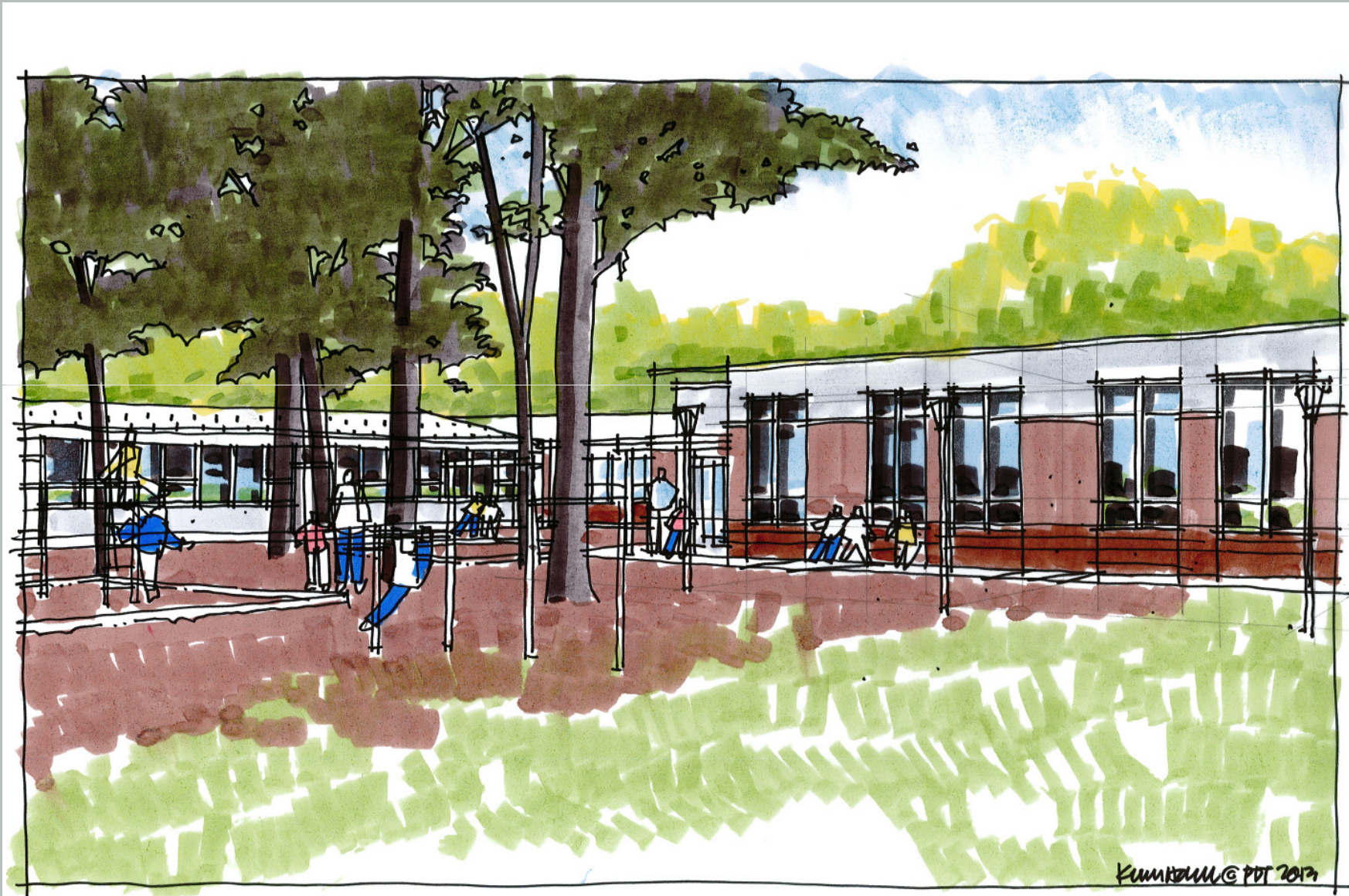


- Coffin Elementary



Brunswick Master Plan Study

■ Coffin Elementary – New Cafeteria Addition



Brunswick Master Plan Study

■ Brunswick Junior High School



Brunswick Master Plan Study

■ Existing Conditions Coffin Elementary School



Brunswick Master Plan Study

■ Existing Conditions Coffin Elementary School



Brunswick Master Plan Study

■ Existing Conditions Coffin Elementary School



Brunswick Master Plan Study

■ Existing Conditions Coffin Elementary School



Brunswick Master Plan Study

■ Existing Conditions Coffin Elementary School



Brunswick Master Plan Study

■ Existing Conditions Coffin Elementary School



Brunswick Master Plan Study

■ Existing Conditions Coffin Elementary School



Brunswick Master Plan Study

■ Existing Conditions Coffin Elementary School



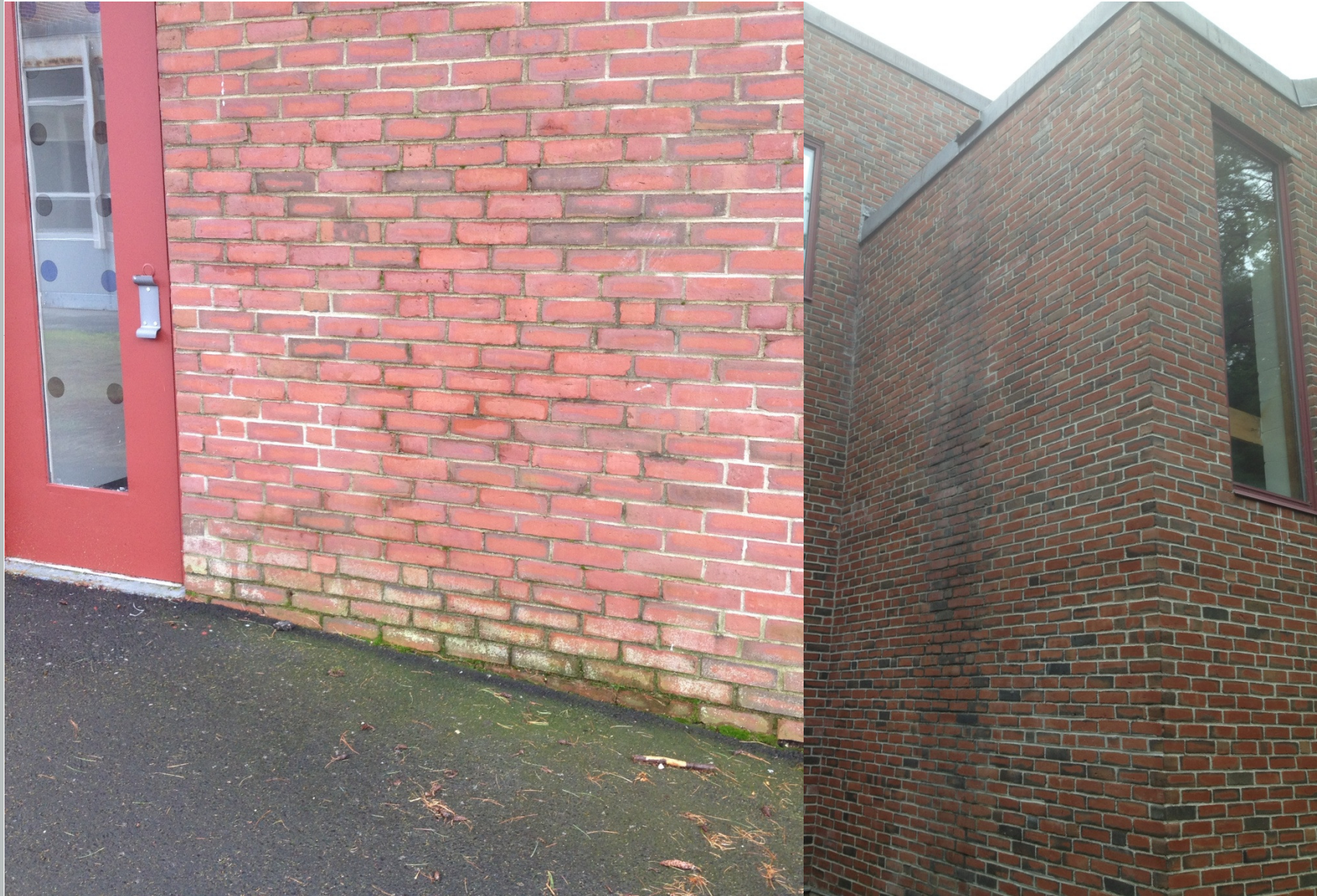
Brunswick Master Plan Study

■ Existing Conditions Brunswick Junior High School



Brunswick Master Plan Study

■ Existing Conditions Brunswick Junior High School



Brunswick Master Plan Study

■ Existing Conditions Brunswick Junior High School



Brunswick Master Plan Study

■ Existing Conditions Brunswick Junior High School



Brunswick Master Plan Study

■ Existing Conditions Brunswick Junior High School



Brunswick Master Plan Study

■ Existing Conditions Brunswick Junior High School



Brunswick Master Plan Study

■ Existing Conditions Brunswick Junior High School



Brunswick Master Plan Study

■ Existing Conditions Brunswick Junior High School



Brunswick Master Plan Study

■ Cost Options

I. COFFIN ELEMENTARY SCHOOL

- Option 1 – Additions only at Coffin Elementary School
- Option 2 – Repair and code issue upgrades
- Option 3 – Energy code conformance update
- Option 4 – Full renovation for 40 Year Life Cycle

II. BRUNSWICK JR. HIGH SCHOOL

- Option 1 – Additions only at Jr. High School
- Option 2 – Repair and code issue upgrades
- Option 3 – Energy code conformance update
- Option 4 – Full renovation (except 1983 building)

III. NEW ELEMENTARY SCHOOL AT COFFIN ELEMENTARY SITE

IV. NEW ELEMENTARY SCHOOL AT JORDAN ACRES SITE