

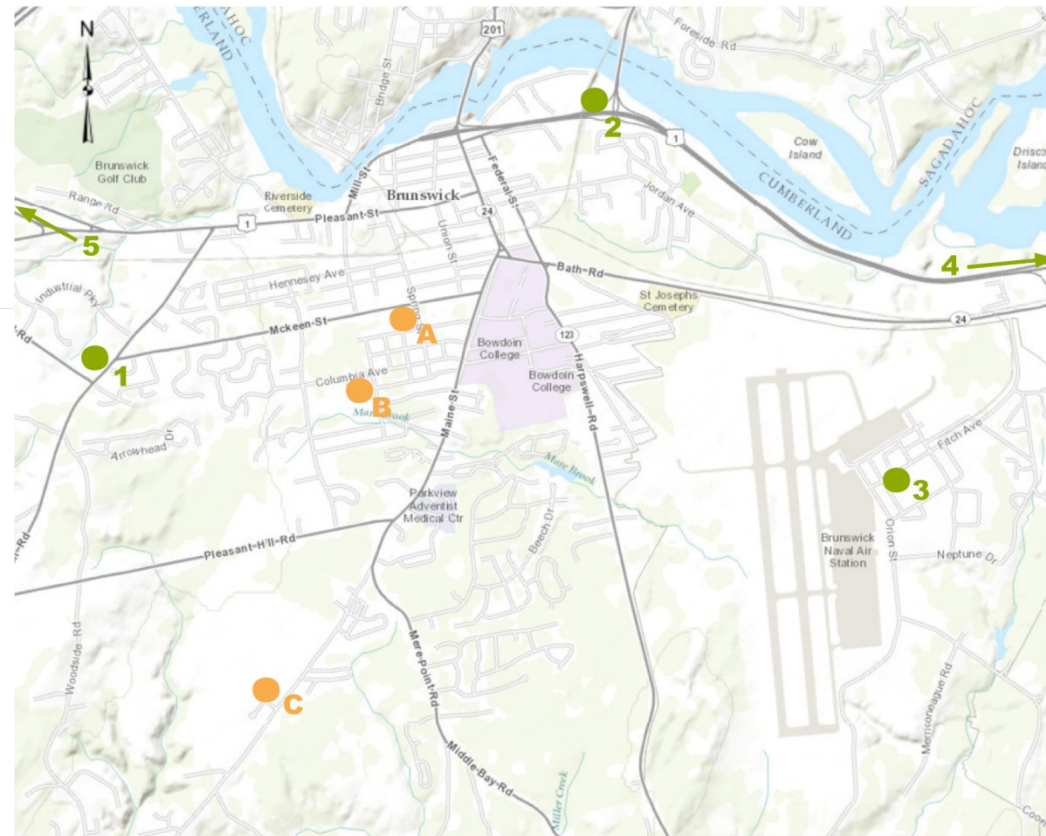
Architecture ■ Interior Design ■ Planning



ARCHITECTS

Brunswick Master Plan Study

■ Bus Garage Land Search



LEGEND

- SCHOOL SITE
- POTENTIAL BUS GARAGE LOCATION

Site Search

Five sites were assessed as part of the study. Conceptual site plans were developed to test the viability of the different sites and a matrix outlining various site development costs were developed for each site for which board approved exploring.

District Schools

A Harriet Beacher Stowe Elementary School

B Brunswick Junior High School and Coffin Elementary School

C Brunswick High School

Potential Bus Garage Sites

1 Brunswick Industrial Park

2 Times Record Building Site

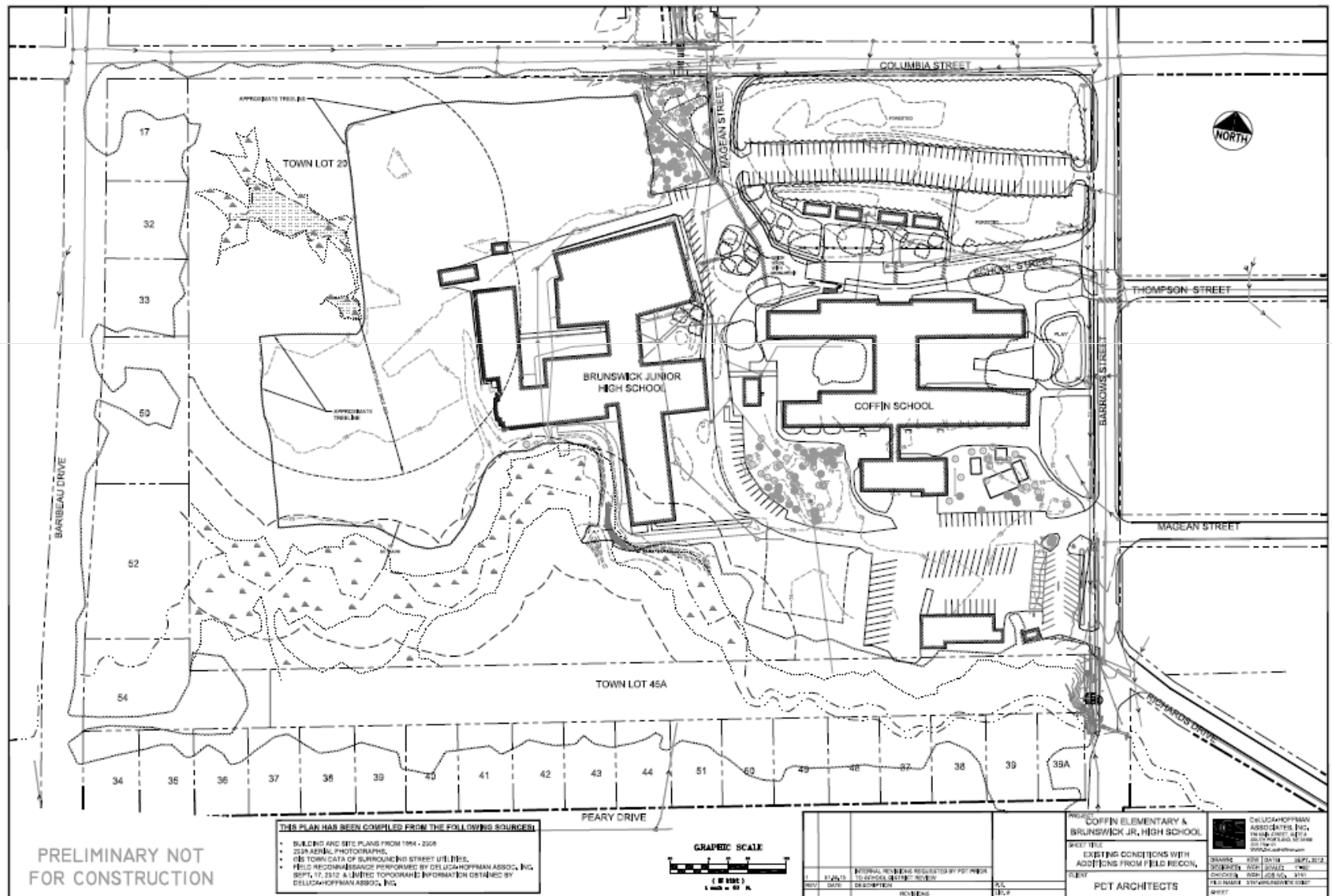
3 Brunswick Naval Air Station

4 Crooker Parcel

5 Brunswick Commerce Center

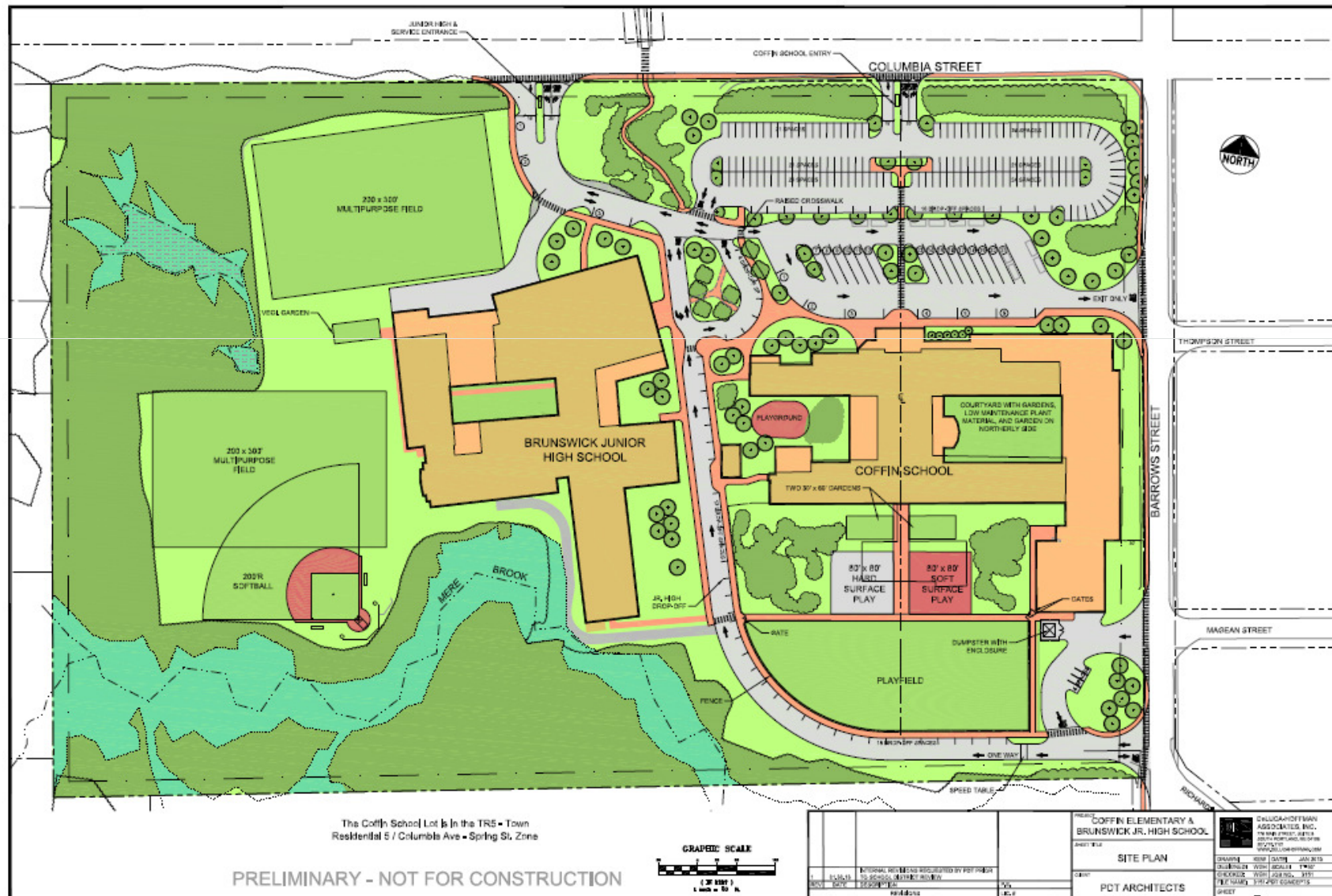
Brunswick Master Plan Study

■ Existing Campus Site Plan



Brunswick Master Plan Study

■ Proposed Campus Site Plan



Brunswick Master Plan Study

- Coffin Interior Courtyard Perspective Looking Towards Addition



Brunswick Master Plan Study

■ Coffin Elementary – New Cafeteria Addition



Brunswick Master Plan Study

■ Coffin Elementary – View from Barrows Street



■ Brunswick Junior High School



Brunswick Master Plan Study

■ Brunswick Junior High School – New Entrance Concept



Brunswick Master Plan Study

■ Cost Summary

	Light Touch	Major Renovation
Site Develop Cost	\$3,073,064	\$ 3,073,064
Coffin	\$13,743,627	\$17,288,191
Junior High	<u>\$10,529,357</u>	<u>\$13,106,051</u>
	\$27,346,048	\$33,467,306

Additional Costs:

Bus Garage	\$2,503,921
Energy Code (Coffin)	\$872,360
Energy Code (JHS)	\$1,459,080

Alternative Options:

New 660 Student Elementary School at Coffin Site	\$22,575,930
New 600 Student Elementary School at Jordan Acres Site	\$24,096,930

Brunswick Master Plan Study

■ Cost Summary

Brunswick School Department

PDT Architects
28 May 2013

COST SUMMARY

	<u>Light Touch:</u>	<u>Major Renovation:</u>	<u>New Buildings:</u>
Site Develop Cost	\$ 3,073,064	\$ 3,073,064	\$ 3,073,064
Coffin	\$13,743,627	\$17,288,191	\$22,575,930
Junior High	<u>\$10,529,357</u>	<u>\$13,106,051</u>	<u>\$28,541,327</u>
	\$27,346,048	\$33,467,306	\$54,190,321

INDIVIDUAL SCHOOL CHOICES

<u>Junior High School:</u>		<u>Coffin Elementary:</u>	
Light Renovation/Add.	\$10,529,357	Light Renovation/Add.	\$13,743,627
Major Renovation/Add.	\$13,106,051	Major Renovation/Add.	\$17,288,191
60% New	\$19,091,869	New 660 @ Coffin	\$22,575,930
New JHS	\$28,541,327		



Architecture ■ Interior Design ■ Planning



ARCHITECTS