

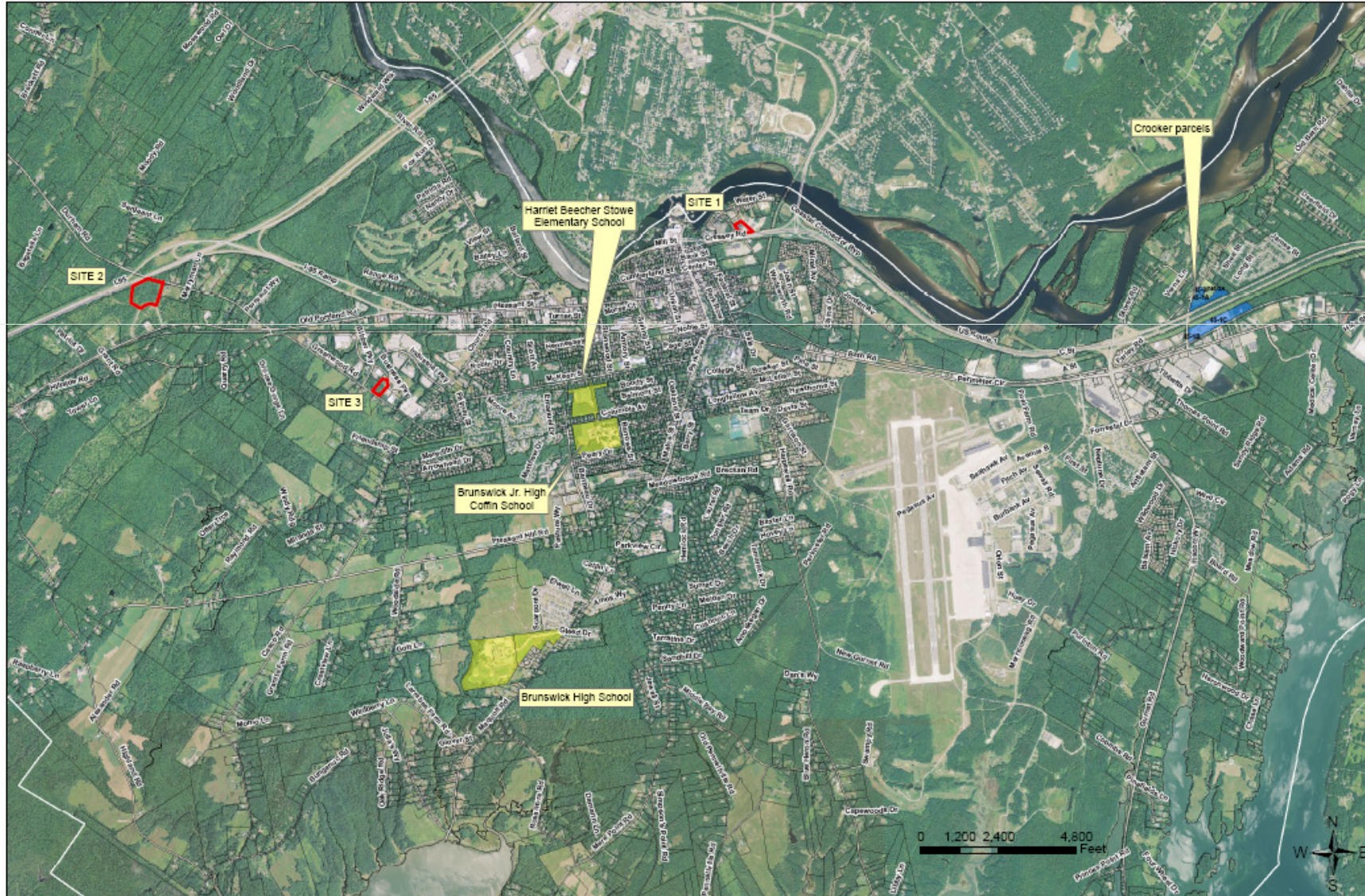
Architecture ■ Interior Design ■ Planning



ARCHITECTS

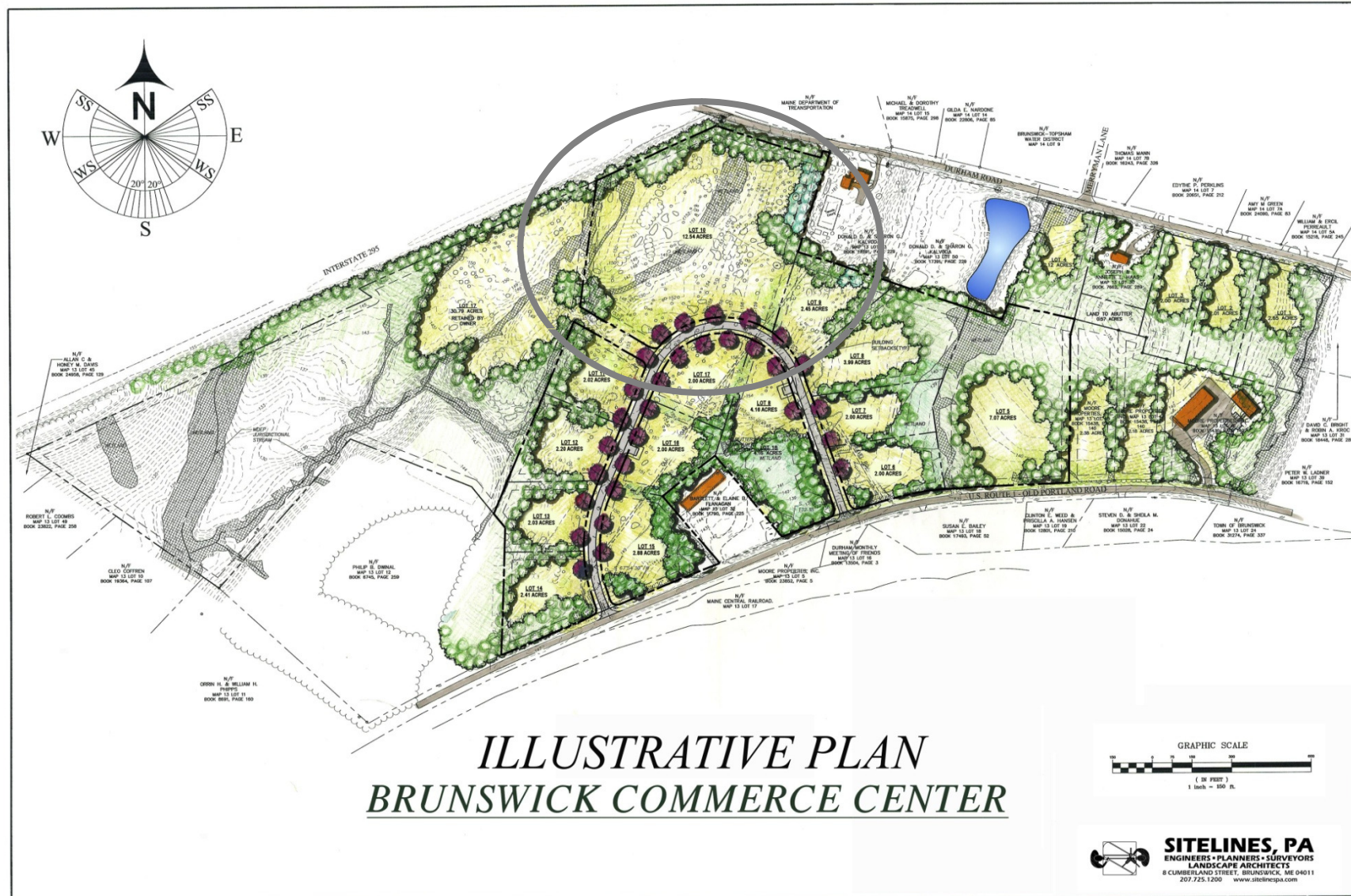
Brunswick Master Plan Study

■ Bus Garage Site Location Map



Brunswick Master Plan Study

■ Bus Garage Site A



■ Bus Garage Site A



Brunswick Master Plan Study

■ Bus Garage Site B



Brunswick Master Plan Study

■ Bus Garage Site B



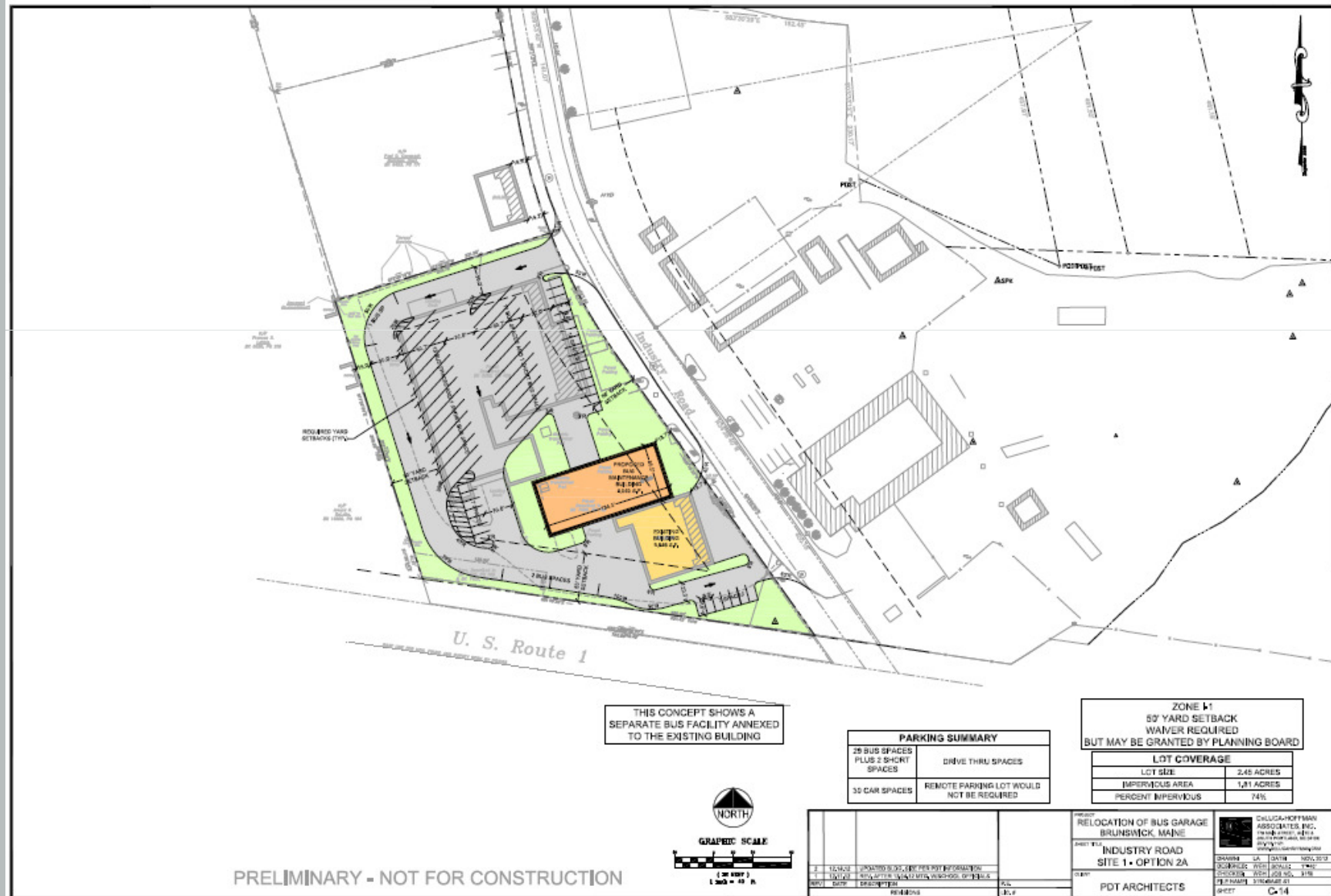
Brunswick Master Plan Study

■ Bus Garage Site C



Brunswick Master Plan Study

■ Bus Garage Site C



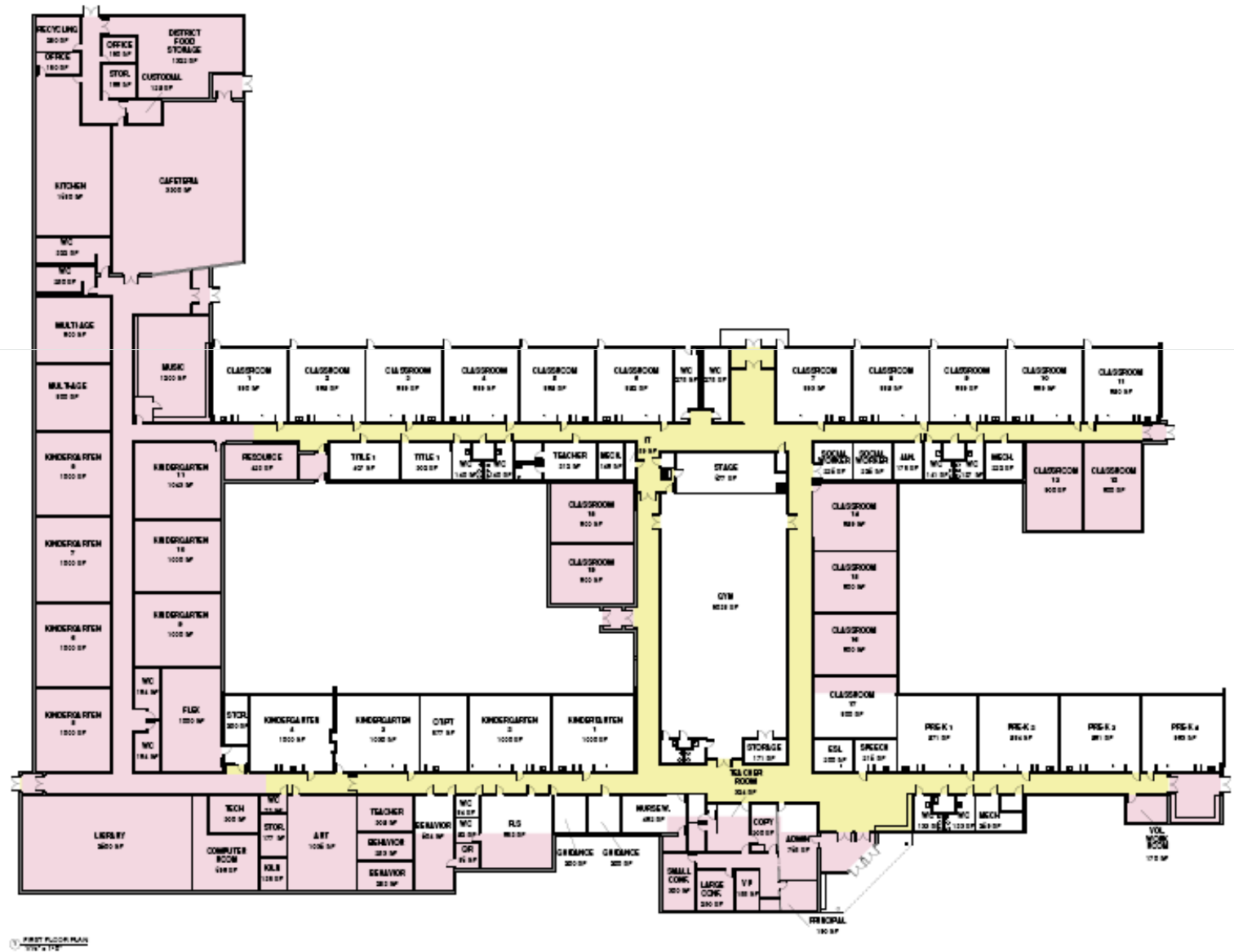
Brunswick Master Plan Study

■ Site Comparison

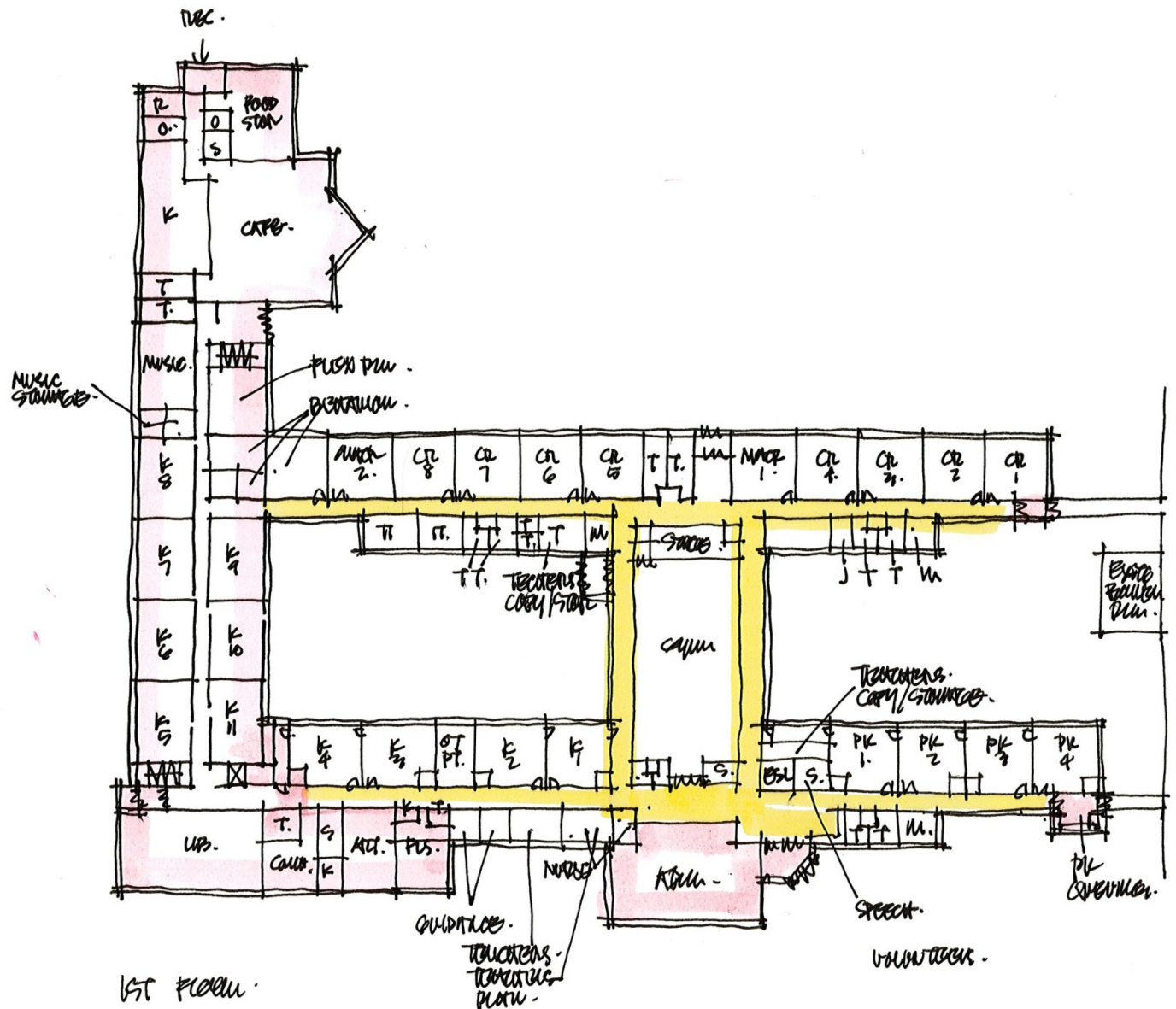
ENGINEER'S OPINION OF PROBABLE SITE CONSTRUCTION COST PROPOSED BUS GARAGE SITE - BRUNSWICK, MAINE

	Lot Near Times Record	Lot 10 of Brunswick Commerce	Lot in Brunswick Industrial Park
Existing Conditions	\$ 39,765.60	\$ 32,248.80	\$ 20,865.60
Site Lighting	\$ 31,860.00	\$ 46,440.00	\$ 31,860.00
Earthwork	\$ 20,736.00	\$ 81,432.00	\$ 44,820.00
Erosion & Sediment Control	\$ 18,586.80	\$ 35,078.40	\$ 18,586.80
Paving	\$ 330,542.64	\$ 437,886.00	\$ 361,179.00
Site Improvements	\$ 13,996.80	\$ 13,996.80	\$ 13,996.80
Retaining Walls	\$ -	\$ -	\$ -
Landscaping	\$ 24,300.00	\$ 45,900.00	\$ 24,300.00
Water Utilities	\$ 5,832.00	\$ 35,748.00	\$ 5,832.00
Sanitary Sewerage	\$ 4,212.00	\$ 99,932.40	\$ 60,723.00
Storm Drainage	\$ 91,854.00	\$ 97,639.56	\$ 91,854.00
Fuel, Electrical, & Communication Util	\$ 27,432.00	\$ 62,208.00	\$ 24,732.00
Special Wetland Impact Fee	\$ -	\$ -	\$ 67,485.90
Subtotal	\$ 609,117.84	\$ 988,509.96	\$ 766,235.10
General Conditions	\$ 30,455.89	\$ 49,425.50	\$ 38,311.76
TOTAL	\$ 639,573.73	\$ 1,037,935.46	\$ 804,546.86

■ Coffin Elementary School

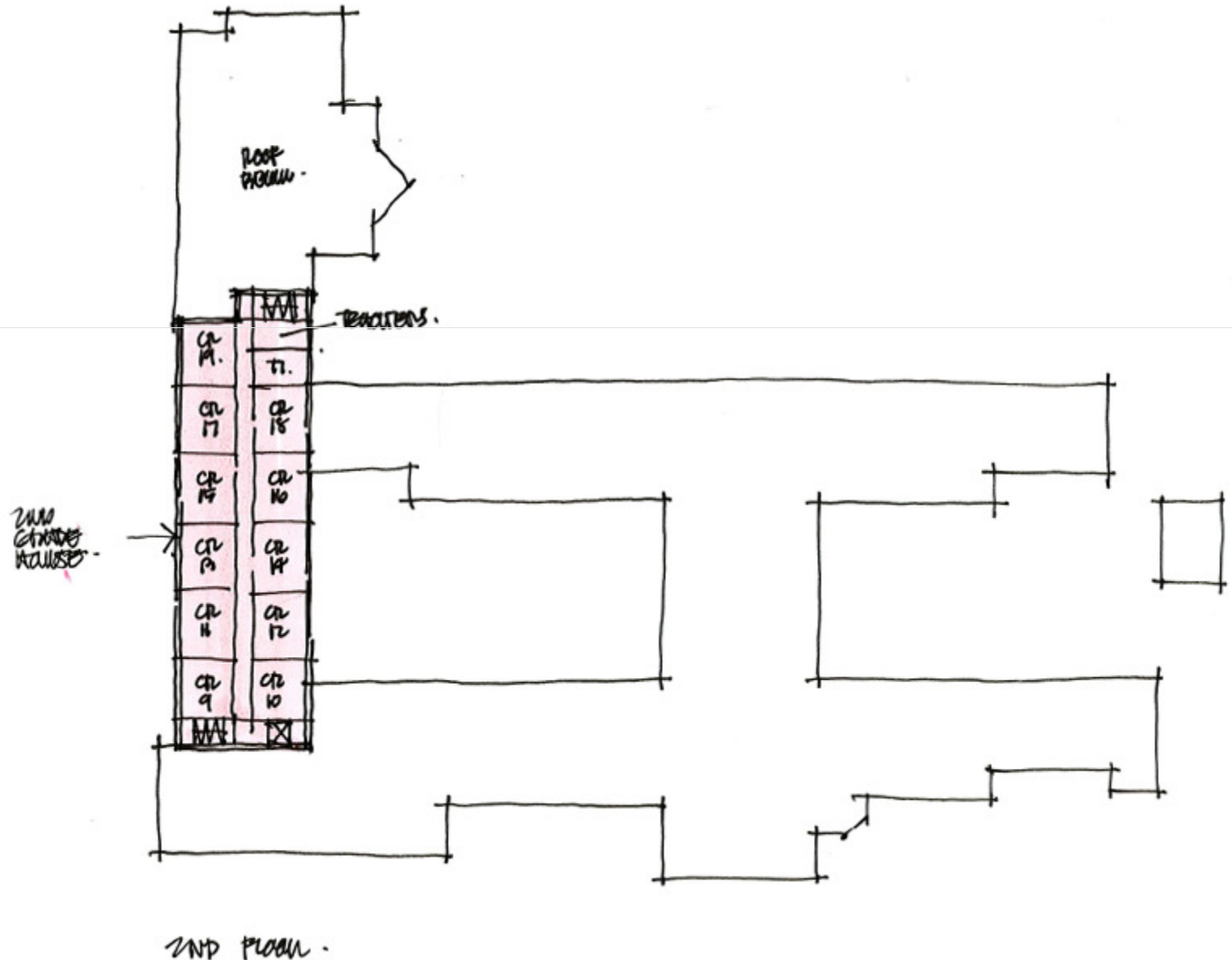


■ Coffin Elementary School Option “B” First Floor



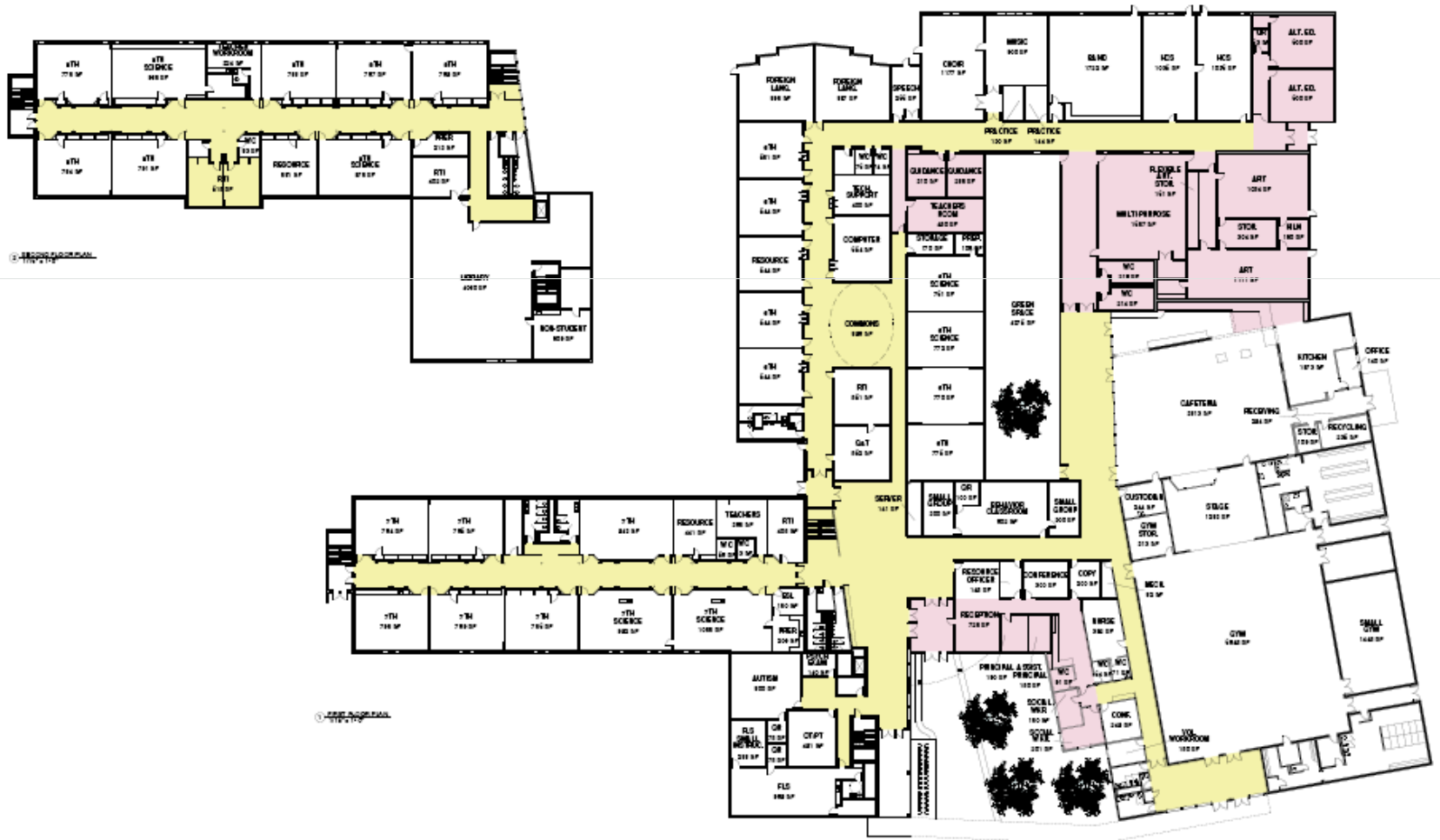
Brunswick Master Plan Study

■ Coffin Elementary School Option "B" Second Floor



Brunswick Master Plan Study

■ Brunswick Junior High School Option "A"



Brunswick Master Plan Study

■ Brunswick Junior High School Option "B"

