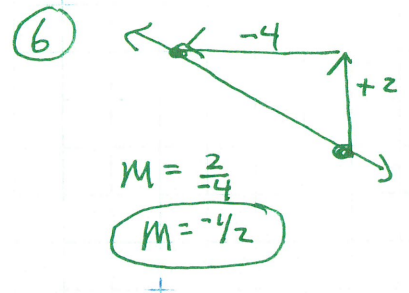
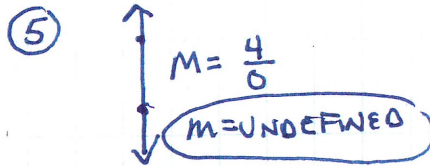
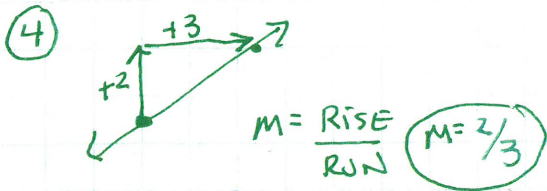


① THE SLOPE OF A NONVERTICAL LINE IS THE RATIO OF THE VERTICAL CHANGE TO THE HORIZONTAL CHANGE BETWEEN ANY 2 POINTS ON A LINE



⑦ pts (12,0) (6,3) ERROR: Reversed x + y

$$m = \frac{\Delta y}{\Delta x} = \frac{0-3}{12-6} = \frac{-3}{6} = -\frac{1}{2}$$

⑧ (-2,-1) (4,5) $m = \frac{\Delta y}{\Delta x} = \frac{-1-5}{-2-4} = \frac{-6}{-6} = 1$

⑩ (5,-3) (-5,-3) $m = \frac{-3+3}{5+5} = \frac{0}{10} = 0$
NOTE: $-(-3) = +3$, $-(-5) = +5$

⑫ (-3,4) (4,1) $m = \frac{4-1}{-3-4} = \frac{3}{-7} = -\frac{3}{7}$

⑭ (0,0) (0,-6) $m = \frac{0+6}{0-0} = \frac{6}{0} = \text{UNDEFINED}$

⑯ (-10,-2) (-8,8) $m = \frac{-2-8}{-10+8} = \frac{-10}{-2} = 5$

⑰

Rate of Change = $\frac{\text{Cost } \$s}{\text{Time}}$

Pick any 2 points

$$\frac{\text{Cost } \$s}{\text{Time}} = \frac{\$8.25 - 6.00}{5 - 4 \text{ days}} = \$2.25/\text{day}$$

$\$2.25/\text{DAY}$

means that "it costs \$2.25 per day to rent a movie"

⑤7 $y = x + 7$

$$-x + y = 7$$

$$\boxed{\begin{matrix} x: -7 \\ y: 7 \end{matrix}}$$

⑤8 $y = -x - 1$

$$x + y = -1$$

$$\boxed{\begin{matrix} x: -1 \\ y: -1 \end{matrix}}$$

⑤9 $y = 8 - 2x$

$$+2x \quad +2x$$

$$2x + y = 8$$

$$\boxed{\begin{matrix} x: 4 & (4,0) \\ y: 8 & (0,8) \end{matrix}}$$