

10.2E GRAPH QUADRATIC FUNCTIONS
IN INTERCEPT FORM

Pg 641

Form

$$y = a(x-p)(x-q)$$

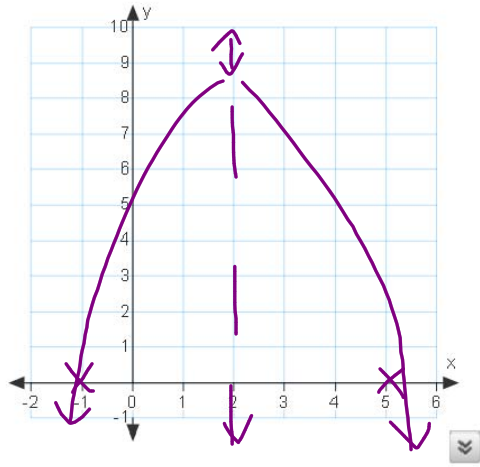
X INTERCEPTS
ARE $p+q$

A.S. AVERAGE
X INTERCEPTS

$$x = \frac{p+q}{2}$$

EXAMPLE $y = -(x+1)(x-5)$

$A = -1$ XINT: $-1, 5$



A.S.
 $x = \frac{-1+5}{2}$
 $x = 2$
VERTEX
(2, 9)

CAN ALWAYS PUT QE IN

STD FORM TO GRAPH $y = -x^2 + 4x + 5$

OR
GRAPH OLD WAY