

No.	Date	Description
Revision Schedule		



JOB NO.  
17078

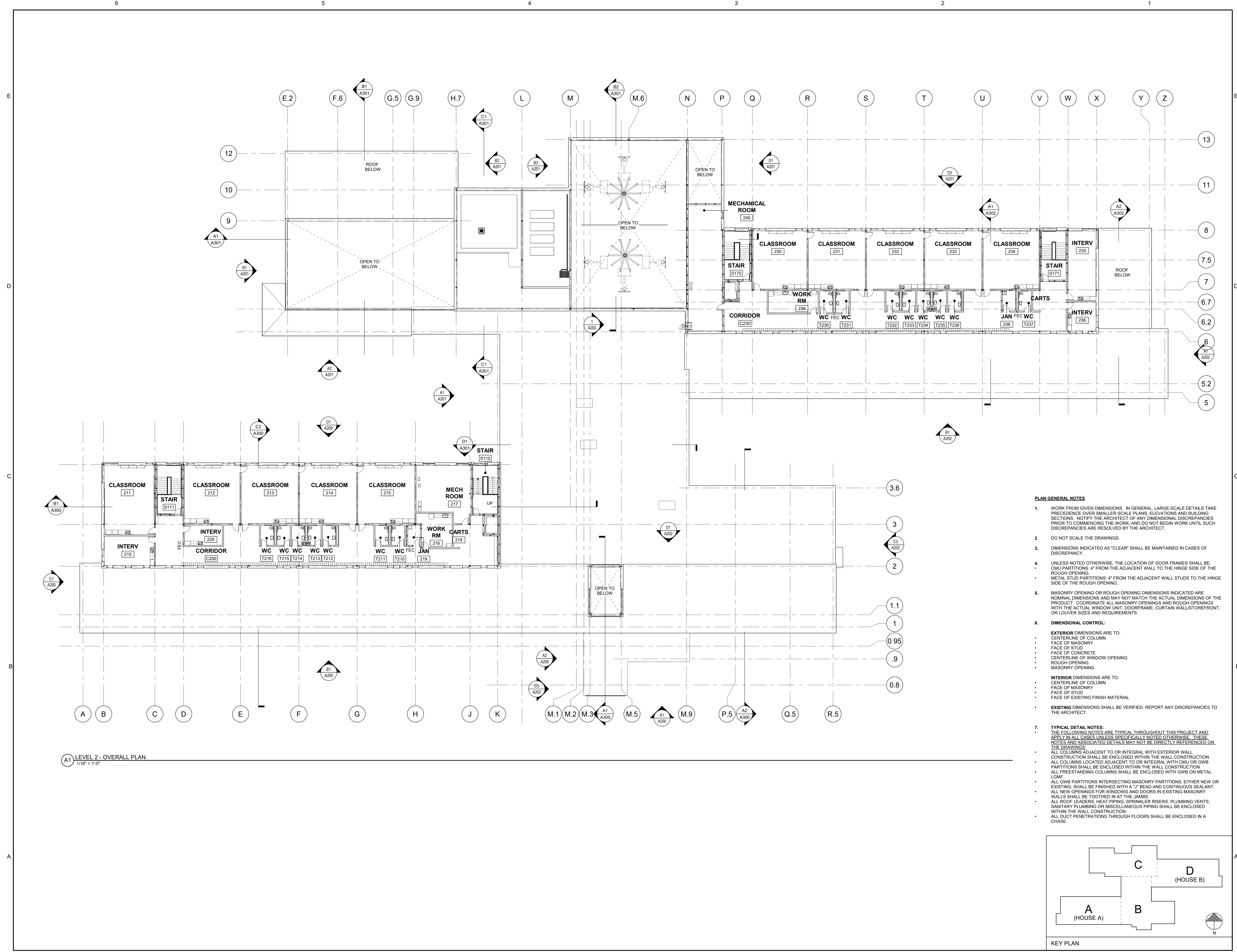
DRWN. CHK  
Checker

SCALE:  
1/16" = 1'-0"

ISSUE  
Conformed Set  
08/24/18

TITLE  
OVERALL PLAN -  
LEVEL 2

SHEET  
A102



- PLAN GENERAL NOTES**
- WORK FROM GIVEN DIMENSIONS. IN GENERAL, LARGE-SCALE DETAILS TAKE PRECEDENCE OVER SMALLER SCALE PLANS, ELEVATIONS AND BUILDING SECTIONS. NOTIFY THE ARCHITECT OF ANY DIMENSIONAL DISCREPANCIES PRIOR TO COMMENCING THE WORK, AND DO NOT BEGIN WORK UNTIL SUCH DISCREPANCIES ARE RESOLVED BY THE ARCHITECT.
  - DO NOT SCALE THE DRAWINGS.
  - DIMENSIONS INDICATED AS "CLEAR" SHALL BE MAINTAINED IN CASES OF DISCREPANCY.
  - UNLESS NOTED OTHERWISE, THE LOCATION OF DOOR FRAMES SHALL BE:
    - CMU PARTITIONS: 4" FROM THE ADJACENT WALL TO THE HINGE SIDE OF THE ROUGH OPENING.
    - METAL STUD PARTITIONS: 4" FROM THE ADJACENT WALL STUDS TO THE HINGE SIDE OF THE ROUGH OPENING.
  - MASONRY OPENING OR ROUGH OPENING DIMENSIONS INDICATED ARE NOMINAL DIMENSIONS AND MAY NOT MATCH THE ACTUAL DIMENSIONS OF THE PRODUCT. COORDINATE ALL MASONRY OPENINGS AND ROUGH OPENINGS WITH THE ACTUAL WINDOW UNIT, DOORFRAME, CURTAIN WALL/STOREFRONT, OR LOUVER SIZES AND REQUIREMENTS.
  - DIMENSIONAL CONTROL:**
    - EXTERIOR DIMENSIONS ARE TO:
      - CENTERLINE OF COLUMN
      - FACE OF MASONRY
      - FACE OF STUD
      - FACE OF CONCRETE
      - CENTERLINE OF WINDOW OPENING
      - ROUGH OPENING
      - MASONRY OPENING
    - INTERIOR DIMENSIONS ARE TO:
      - CENTERLINE OF COLUMN
      - FACE OF MASONRY
      - FACE OF STUD
      - FACE OF EXISTING FINISH MATERIAL
    - EXISTING DIMENSIONS SHALL BE VERIFIED. REPORT ANY DISCREPANCIES TO THE ARCHITECT.
  - TYPICAL DETAIL NOTES:**
    - THE FOLLOWING NOTES ARE TYPICAL THROUGHOUT THIS PROJECT AND APPLY IN ALL CASES UNLESS SPECIFICALLY NOTED OTHERWISE. THESE NOTES AND ASSOCIATED DETAILS MAY NOT BE DIRECTLY REFERENCED ON THE DRAWINGS.
    - ALL COLUMNS ADJACENT TO OR INTEGRAL WITH EXTERIOR WALL CONSTRUCTION SHALL BE ENCLOSED WITHIN THE WALL CONSTRUCTION.
    - ALL COLUMNS LOCATED ADJACENT TO OR INTEGRAL WITH CMU OR GWB PARTITIONS SHALL BE ENCLOSED WITHIN THE WALL CONSTRUCTION.
    - ALL FREESTANDING COLUMNS SHALL BE ENCLOSED WITH GWB ON METAL LGMF.
    - ALL GWB PARTITIONS INTERSECTING MASONRY PARTITIONS, EITHER NEW OR EXISTING, SHALL BE FINISHED WITH A "J" BEAD AND CONTINUOUS SEALANT.
    - ALL NEW OPENINGS FOR WINDOWS AND DOORS IN EXISTING MASONRY WALLS SHALL BE TOOTHED IN AT THE JAMBS.
    - ALL ROOF LEADERS, HEAT PIPING, SPRINKLER RISERS, PLUMBING VENTS, SANITARY PLUMBING OR MISCELLANEOUS PIPING SHALL BE ENCLOSED WITHIN THE WALL CONSTRUCTION.
    - ALL DUCT PENETRATIONS THROUGH FLOORS SHALL BE ENCLOSED IN A CHASE.

A1 LEVEL 2 - OVERALL PLAN  
1/16" = 1'-0"

