

Brunswick New Elementary School

February 8, 2018

Building Committee Meeting

Agenda

1. Approval of the Minutes of the January 11th, 2018 Meeting
2. Update on DEP permit and planning board approvals
3. Update on meetings with abutters
4. Public Comment
5. Update on Existing building conditions
 - Jordan Acres EPA hazardous materials removal permit status
6. Exterior Building Materials studies
7. Debrief on school tours
 - a) Ocean Ave Elementary
 - b) East End Elementary
 - c) Durham Community School
 - d) Falmouth Elementary
8. Classroom layout updates
 - a) Kindergarten Classroom
 - b) 1st/2nd Grade Classroom
 - c) Behavior/ FLS
 - d) Library
 - e) Art
 - f) Gym
 - g) Music
9. Decision on lockers
10. Interiors Subcommittee debrief
11. Playground Subcommittee debrief
12. New Business Items and General Discussion
13. Next Building Committee Meeting:
 - Thursday, March 8, 2018

Existing Building Update

- Materials testing completed.



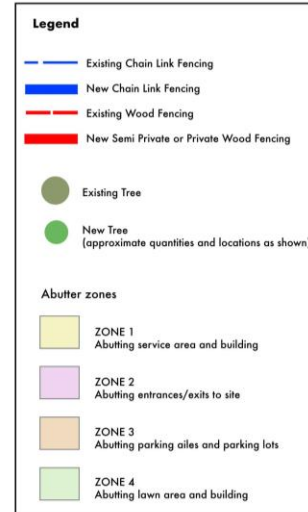
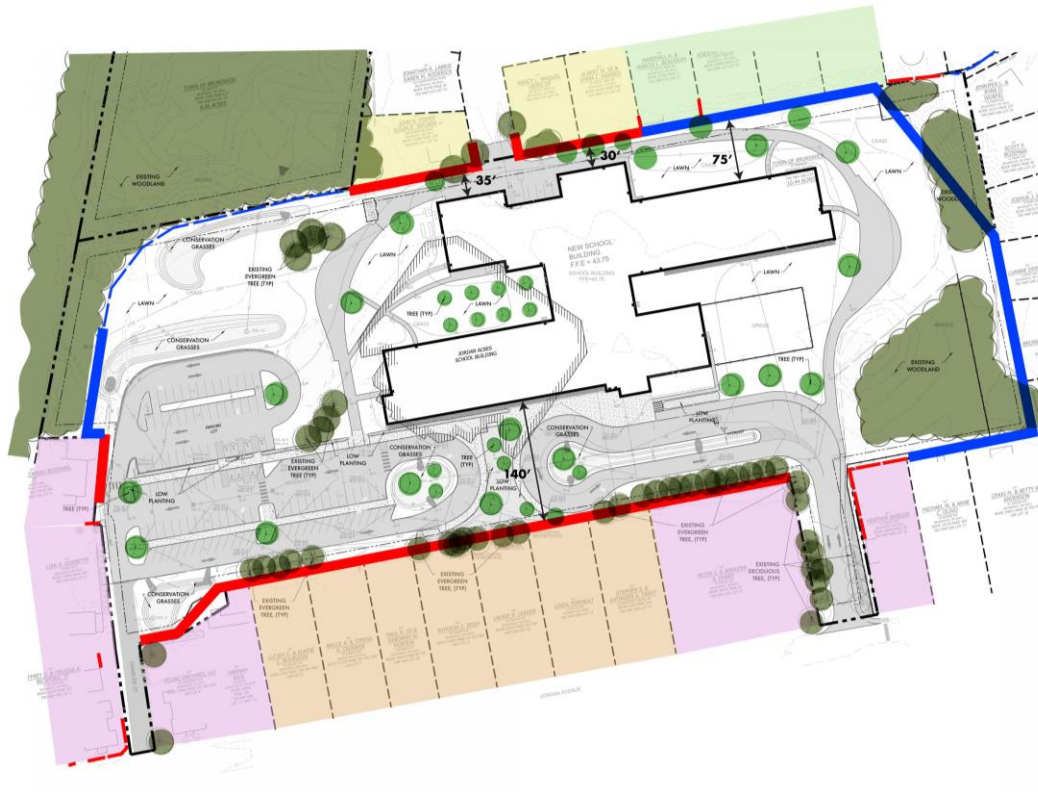
Planning/ Permitting Update

8 February 2018

4

JOSHUA TOMPKINS
LANDSCAPE ARCHITECTURE

PDT
ARCHITECTS
A CHA Company



Abutters Meeting Update

8 February 2018

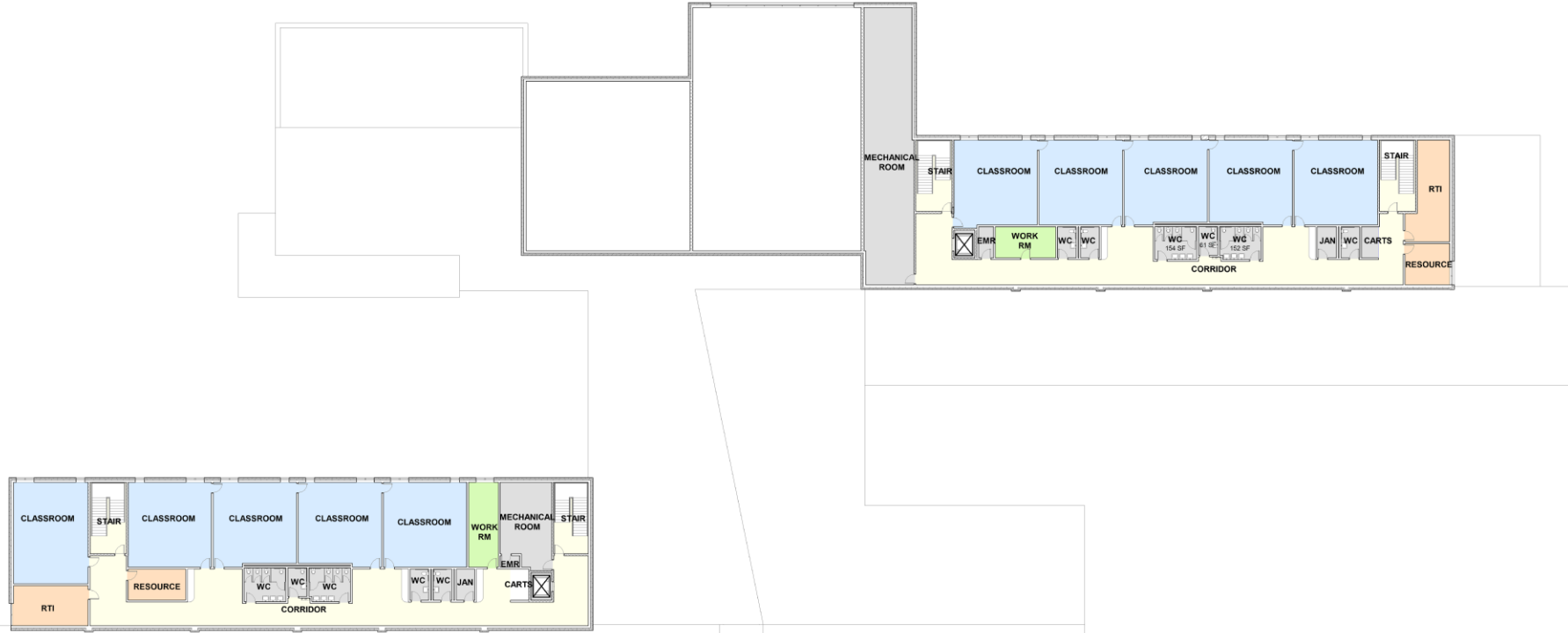
5

JOSHUA TOMPKINS
LANDSCAPE ARCHITECTURE





Overall Plan – Level 1



Overall Plan – Level 2

8 February 2018

7



View at Main Entry Current

8 February 2018

8



View from parent drop-off - Current



View of library/ cafeteria courtyard - Current

8 February 2018

10



View of library/ cafeteria courtyard - Current



View of House B - Current

8 February 2018

12



View of House B - Current

8 February 2018

13



Option A



Option B

Exterior Materials Study

View of House B - Current



Ocean Ave Elementary



East End Community



Durham Community

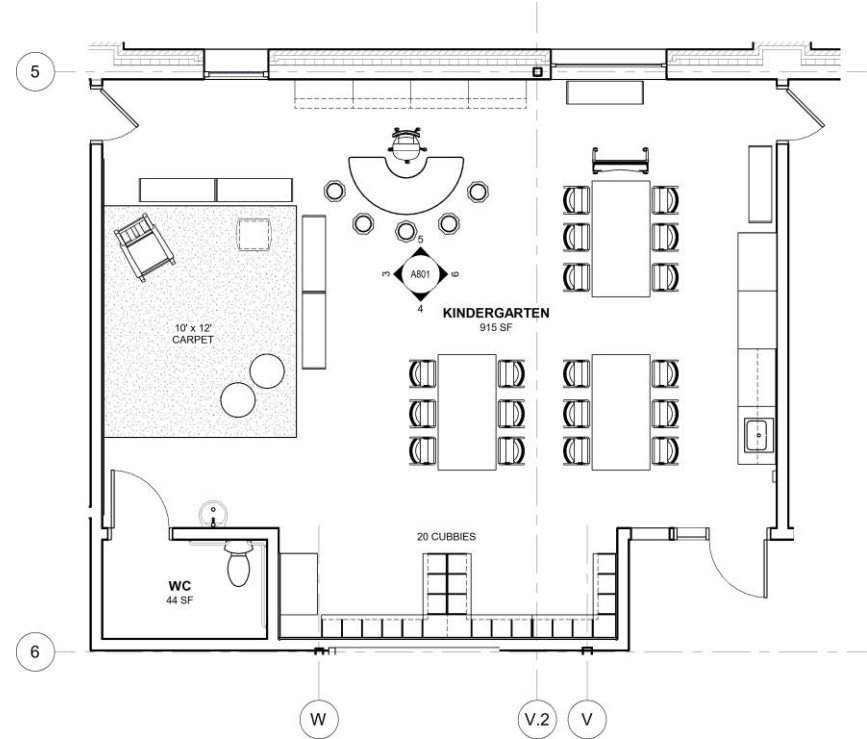


Falmouth Elementary

School Tours Debrief

8 February 2018

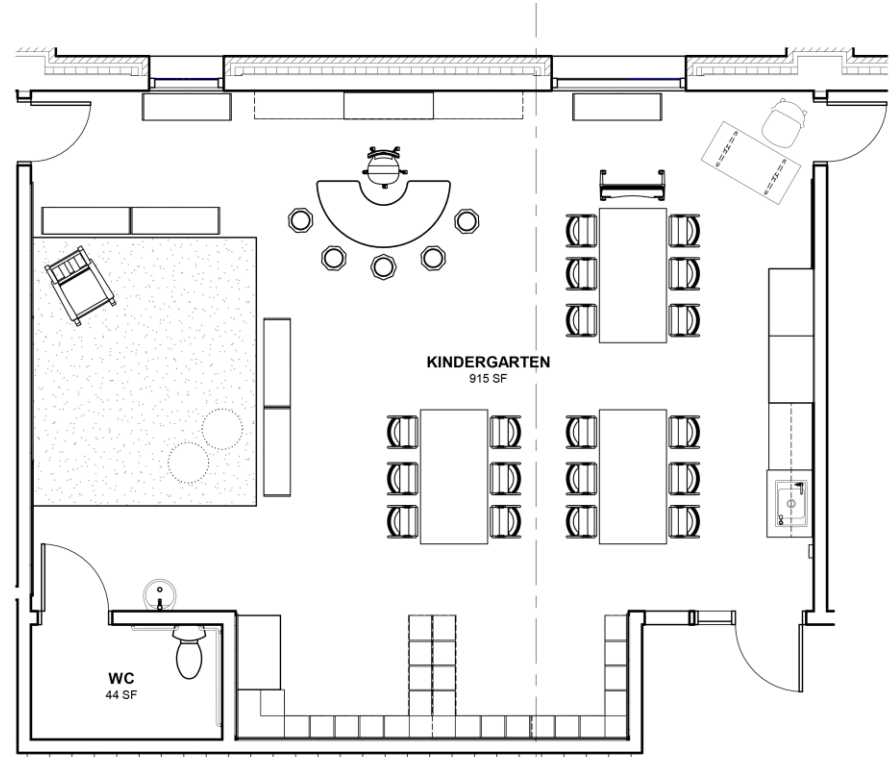
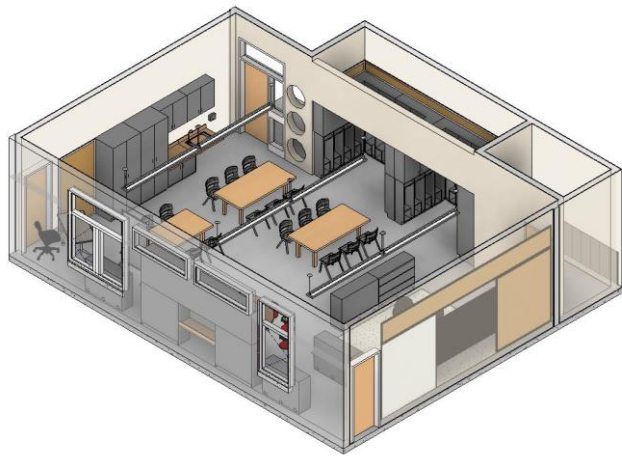
15



Kindergarten Layout – Previous Plan

8 February 2018

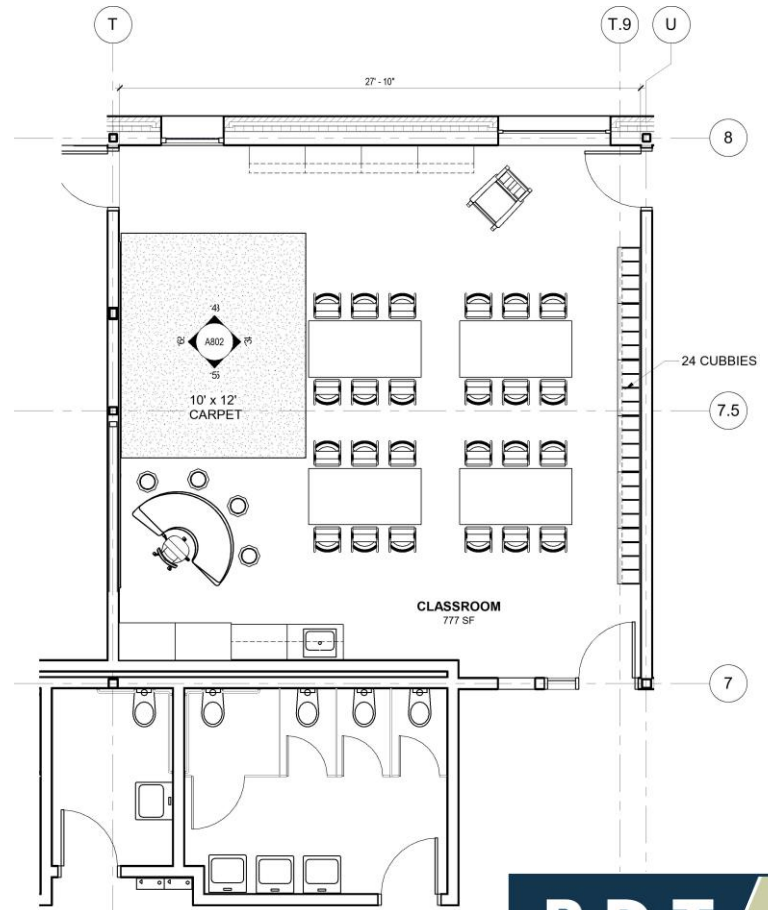
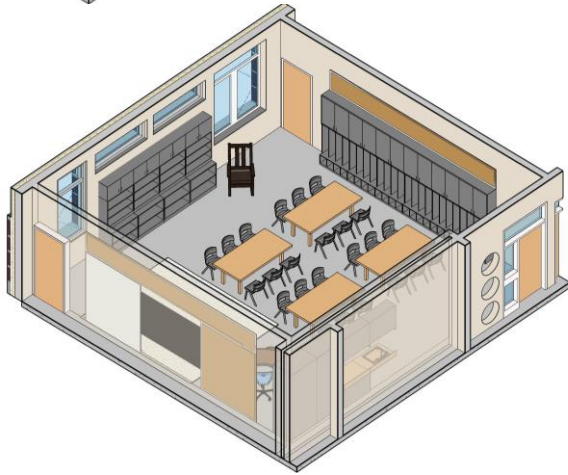
16



Kindergarten Layout – Current Plan

8 February 2018

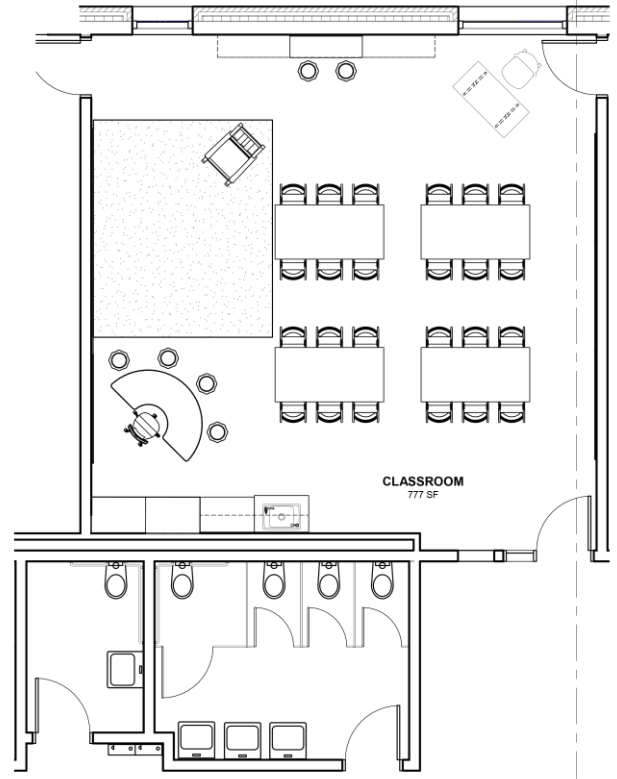
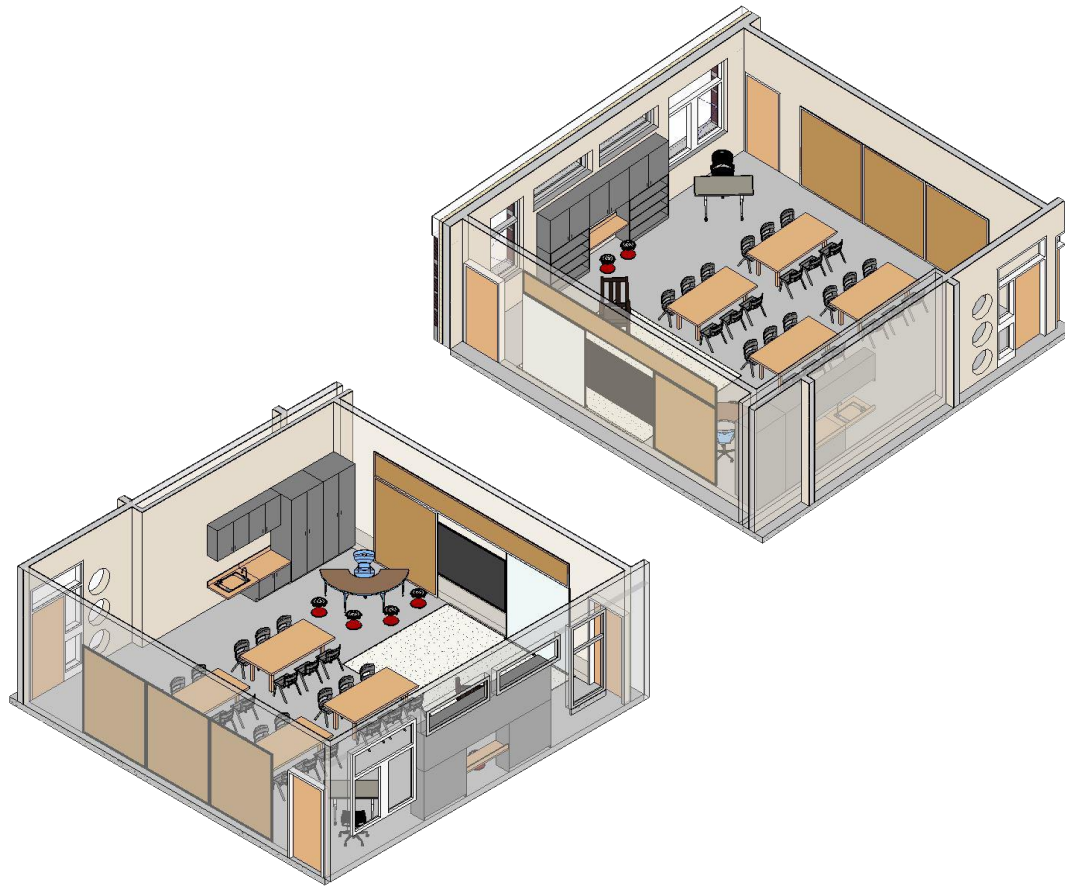
17



1st/2nd Grade Layout – Previous Plan

8 February 2018

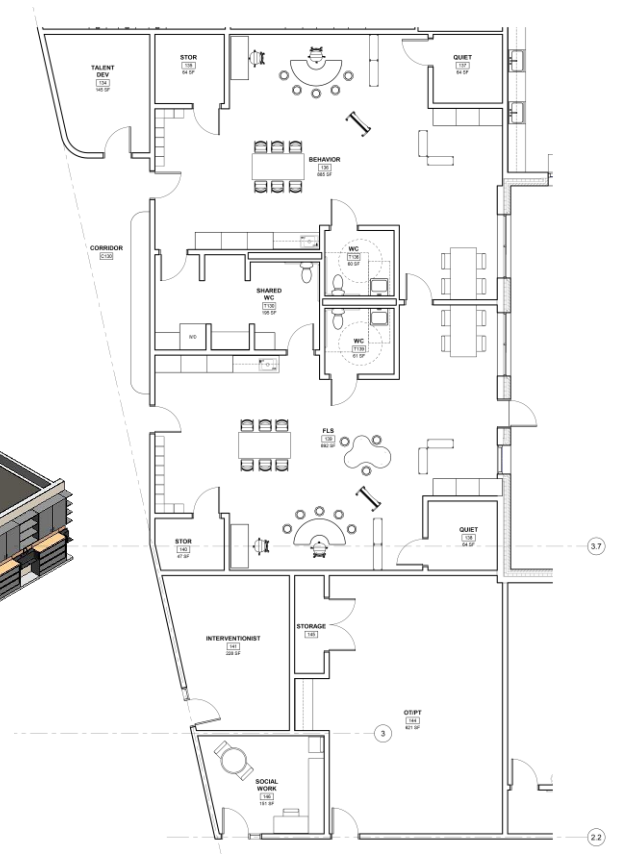
18



1st/2nd Grade Layout – Current Plan

8 February 2018

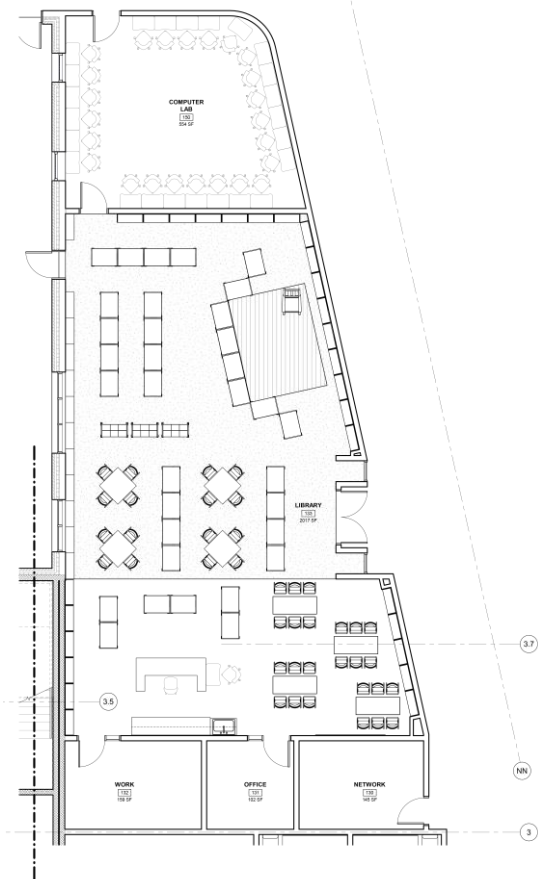
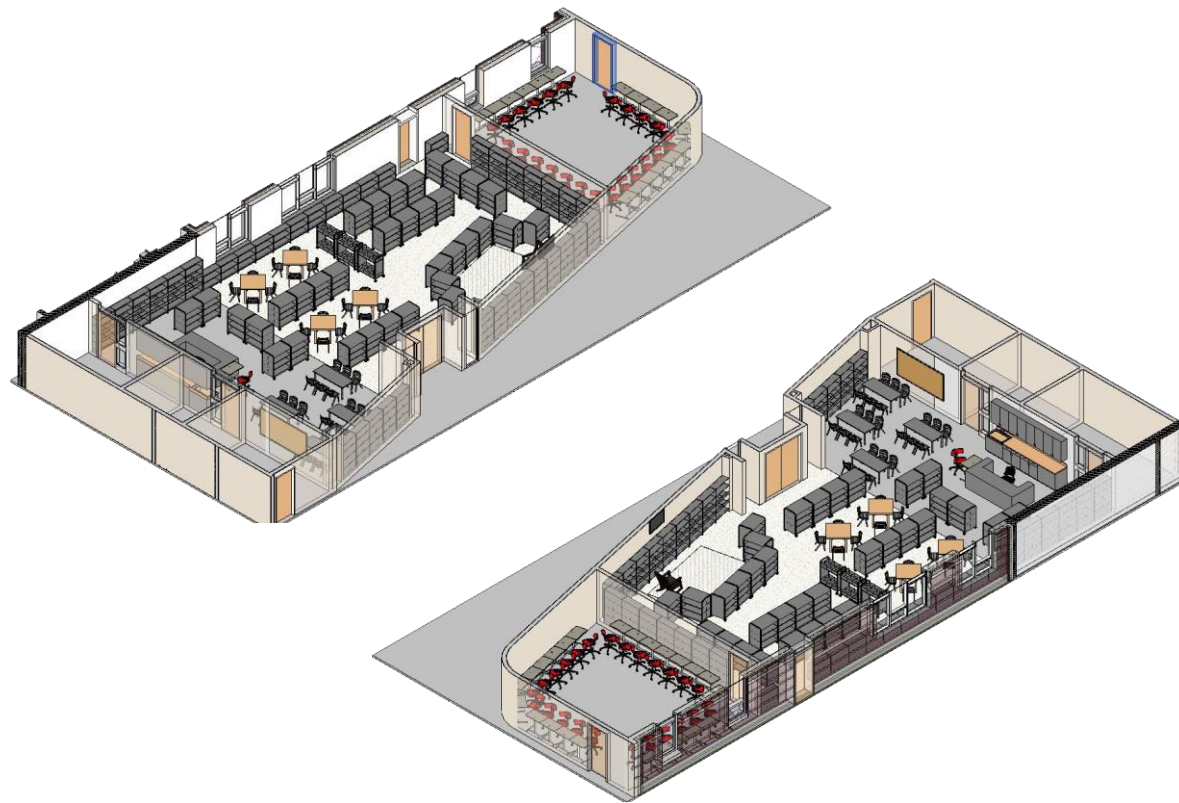
19



Behavior & FLS – Current Plan

8 February 2018

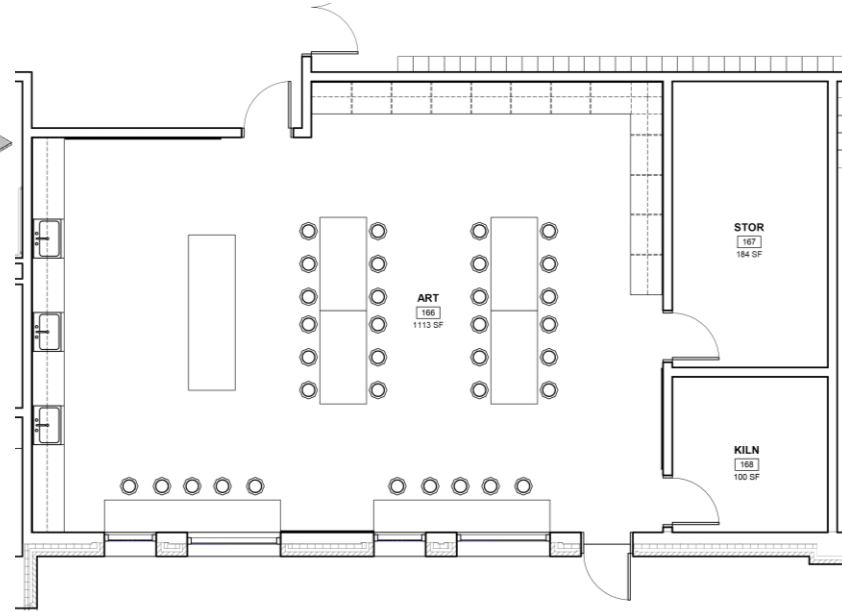
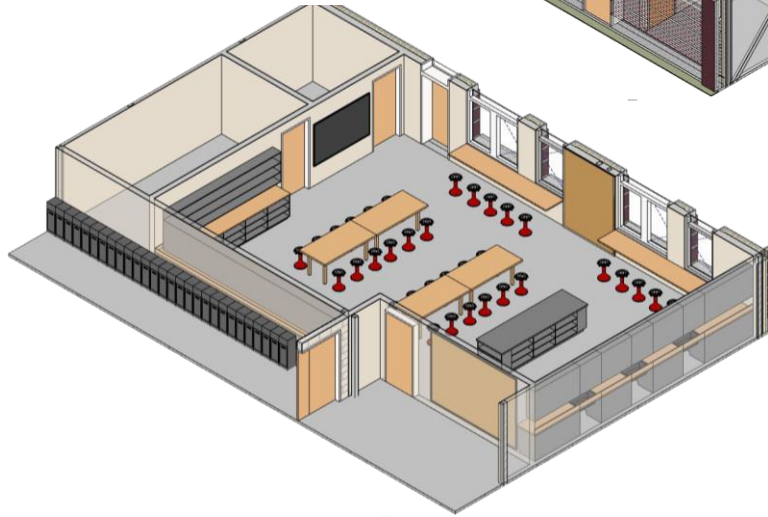
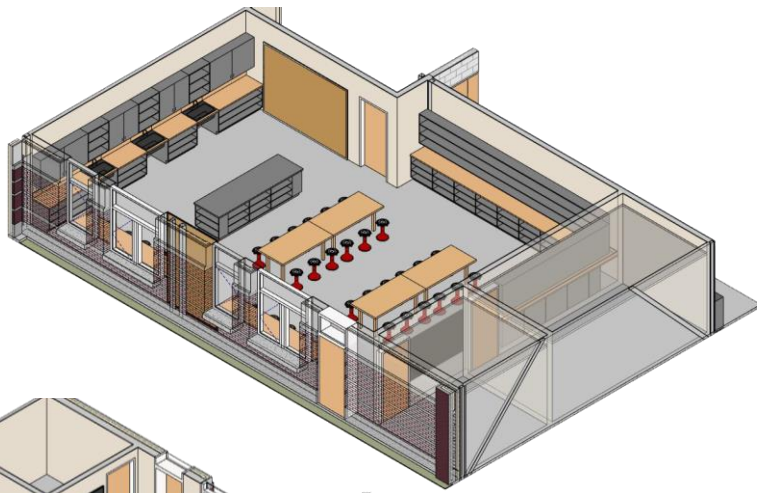
20



Library – Current Plan

8 February 2018

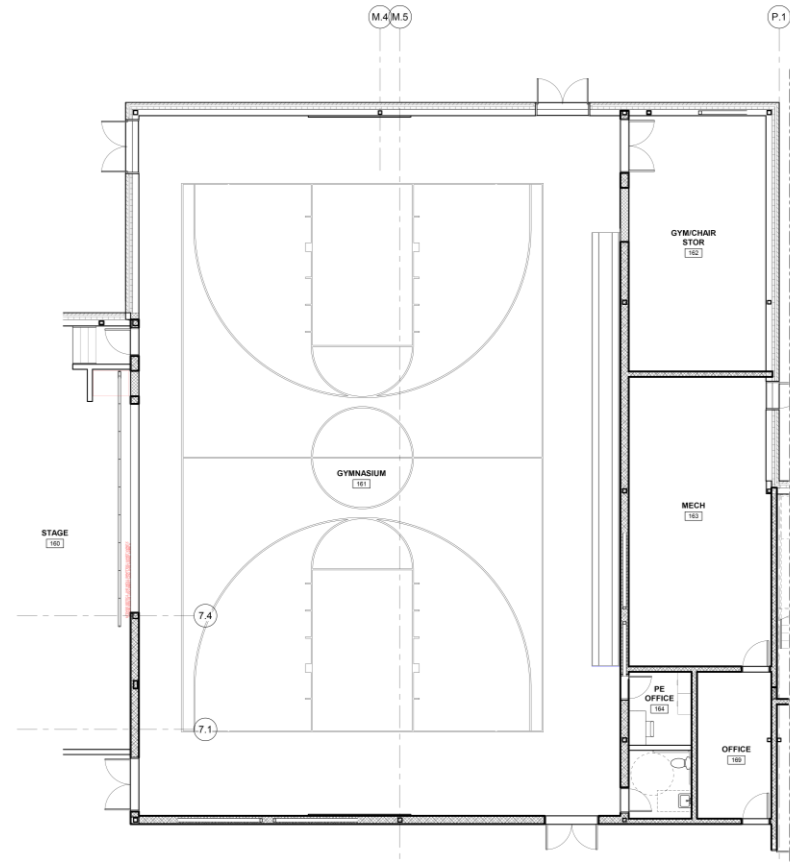
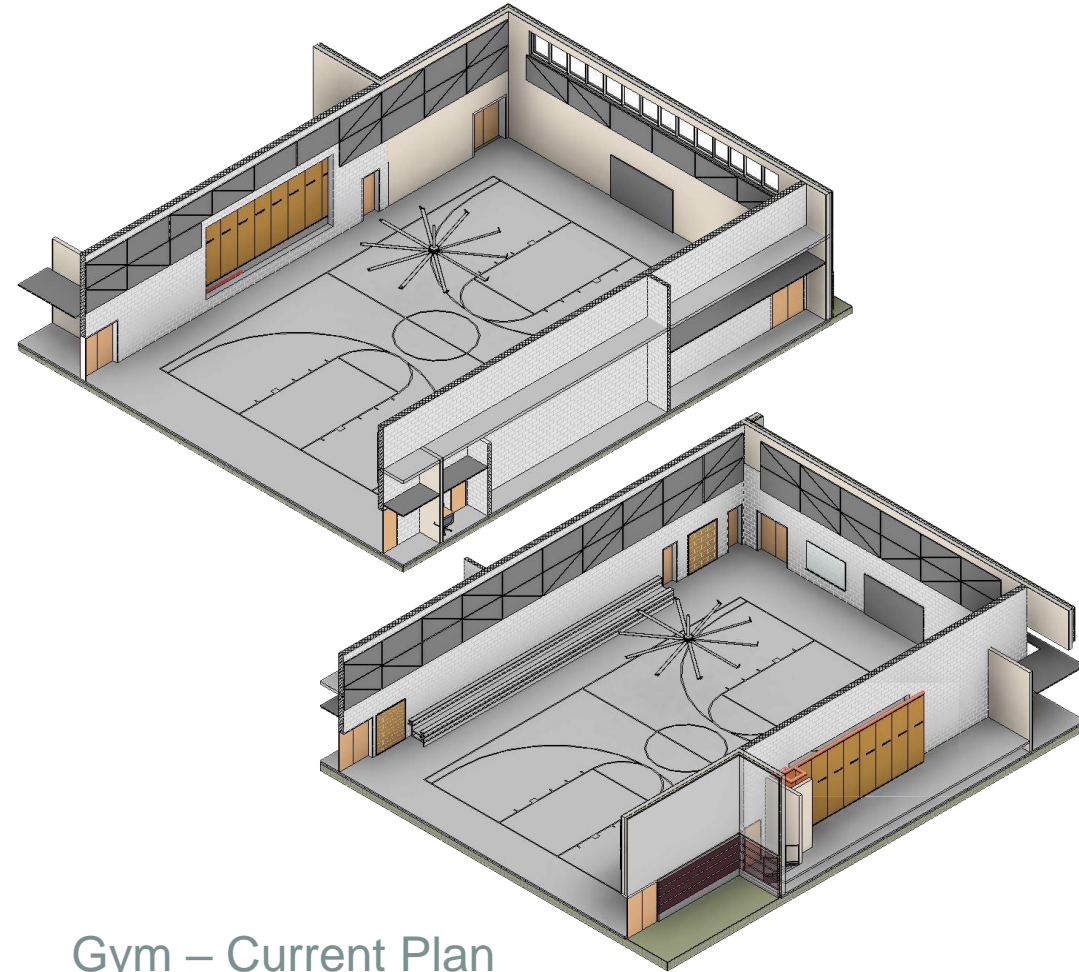
21



Art – Current Plan

8 February 2018

22



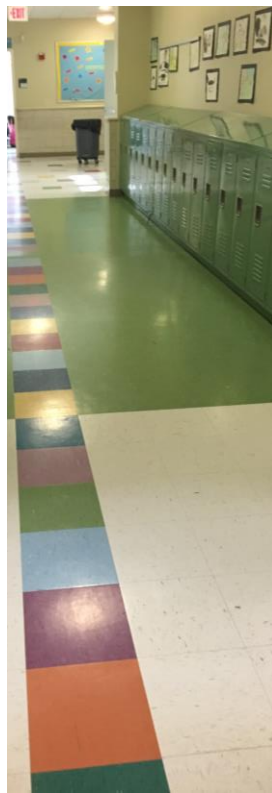
Gym – Current Plan

8 February 2018

23



Ocean Ave - HDPE



East End - Metal



Falmouth – Metal Recessed

Lockers

8 February 2018

24

WHAT

is a concept?

- An overarching theme
- A guiding principle
- A big idea



WHERE

to use it?

- Throughout the school
- To break down the large scale
- To highlight special moments



WHY

is it helpful?

- Informs the finish palette
- Provides opportunities for wayfinding
- Organizes the design



HOW

to apply it?

- Through material changes
- Through patterns
- Through color



Interiors Subcommittee - Concept



Ground Layer (Common Space)



Field Layer (Pre-K Wing)



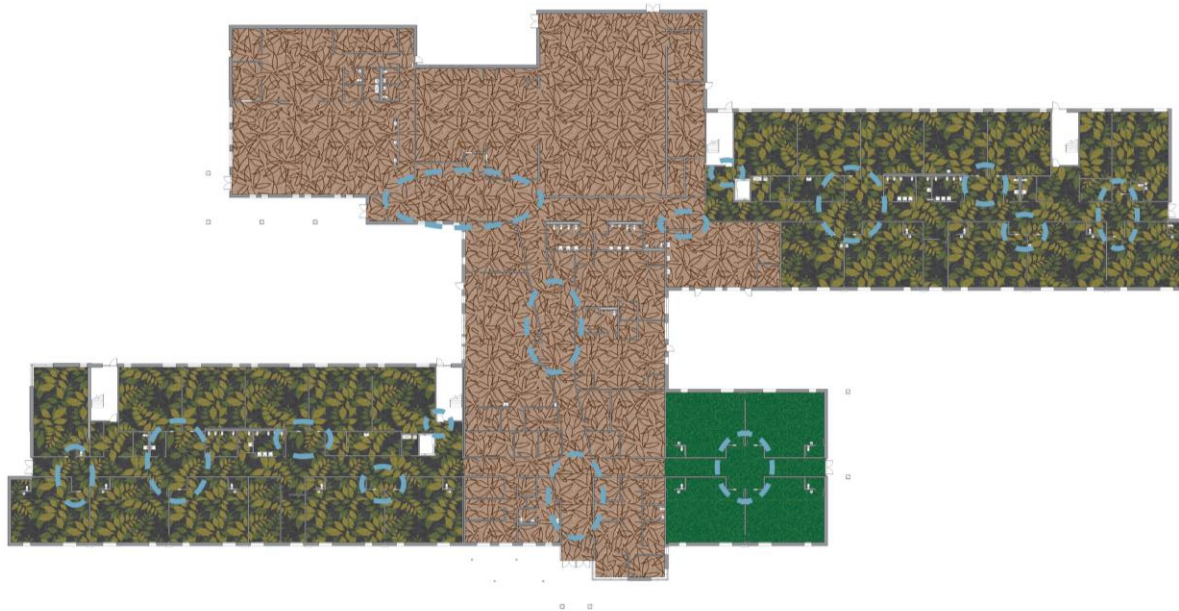
Shrub Layer (Grade K/I Wing)



Canopy Layer (Grade 2 Wing)



Special Moments



Interiors Subcommittee – Layers of a Forest



Ground Layer (Common Space)



Field Layer (Pre-K Wing)



Shrub Layer (Grade K/I Wing)



Canopy Layer (Grade 2 Wing)



Special Moments



Interiors Subcommittee – Layers of a Forest

8 February 2018

27



Meadow (Common Spaces)



Fruit (Pre-K Wing)



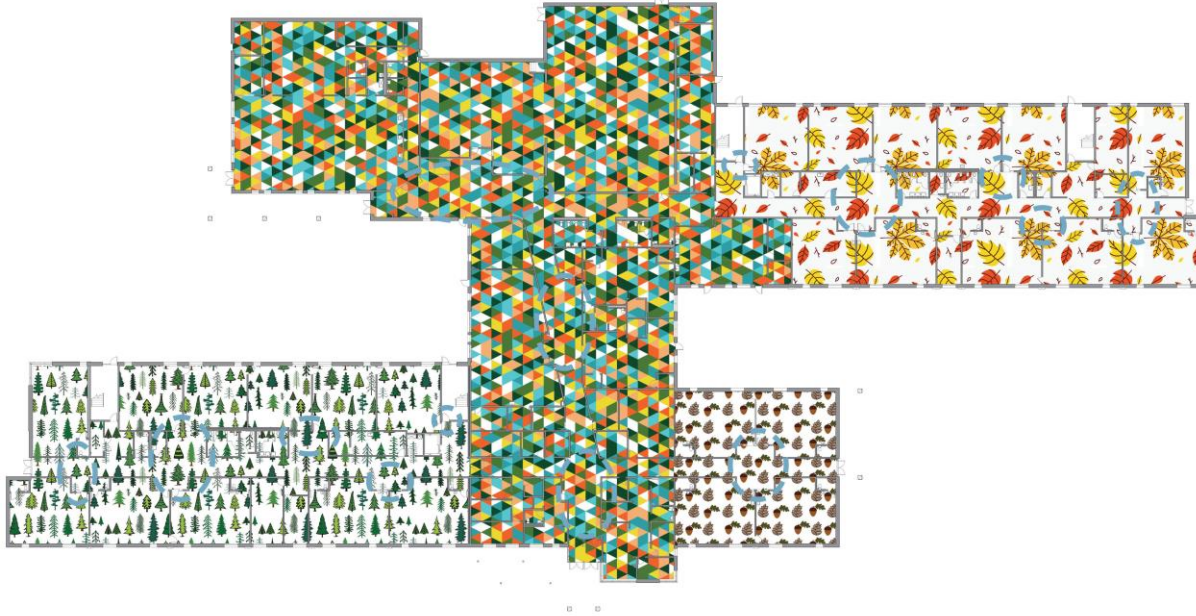
Coniferous (House A Wing)



Deciduous (House B Wing)



Special Moments



Interiors Subcommittee – Deciduous & Coniferous Forests



Meadow (Common Spaces)



Fruit (Pre-K Wing)



Coniferous (House A Wing)



Deciduous (House B Wing)



Special Moments



Interiors Subcommittee – Deciduous & Coniferous Forests

Subcommittees / Working Groups

- Playground subcommittee update

THANK YOU