

You Are the Artist: Creating with Paper Cut Outs

Paper can be used in many imaginative ways to create houses, whole towns, animals and vehicles.

This part of the lesson is about creating buildings and maybe a whole town.

These paper creations can be as simple or as complex as you want.

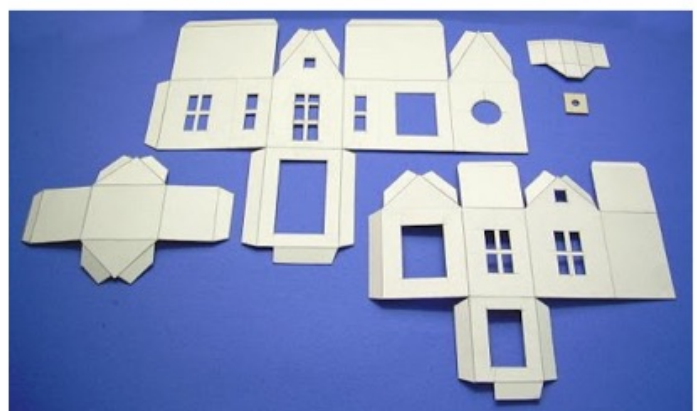
Making them follows the same basic steps. More details and examples are included on other pages but the basic idea is:

1. **Draw and color** all the sides of the building
2. **Cut out** the the pieces
3. **Fold** the building at the corners
4. **Tape or glue** the corners.
5. **Attach** the roof
6. **Your building is done** and you can add some paper people, pets, cars or plants.

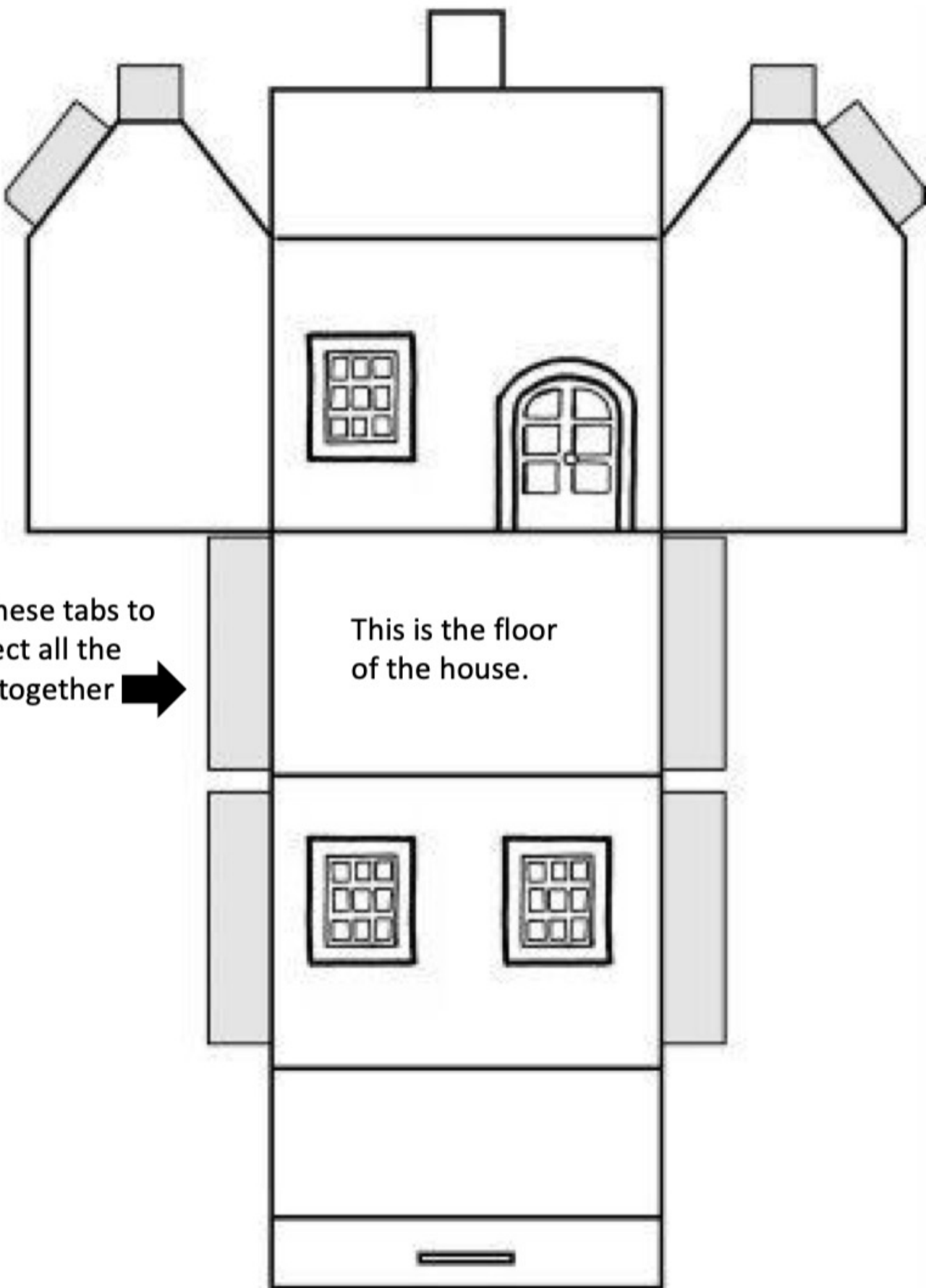
1. Buildings and Towns

2. Animals

3. Vehicles



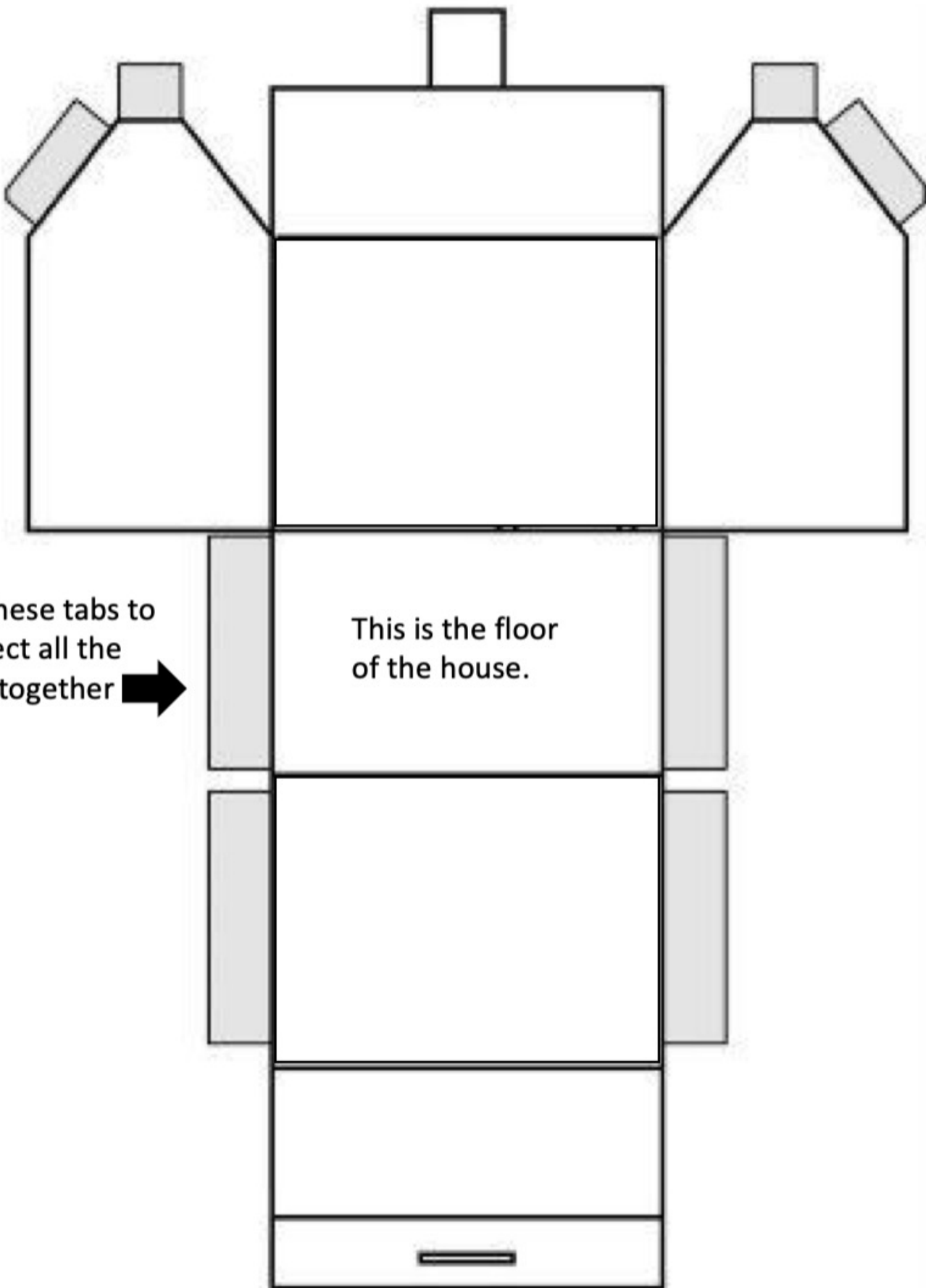
Example 1: A basic house



Use these tabs to connect all the sides together →

This is the floor of the house.

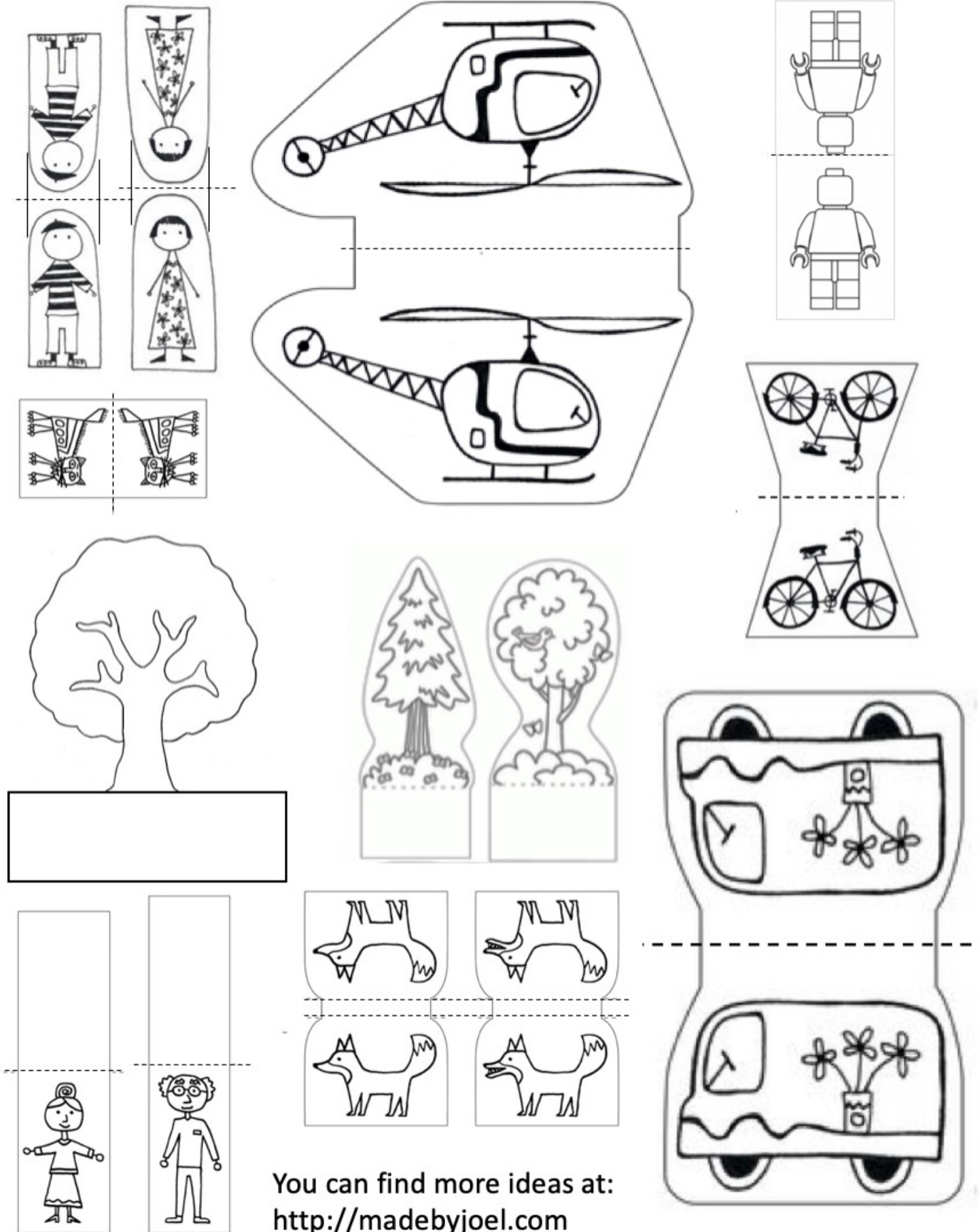
Example 1: A basic house where you can draw the windows and doors



Use these tabs to connect all the sides together →

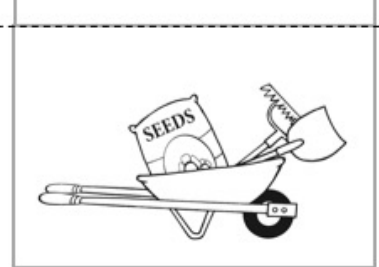
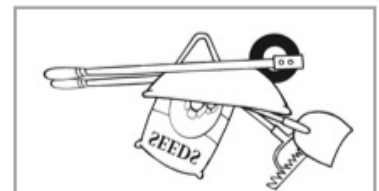
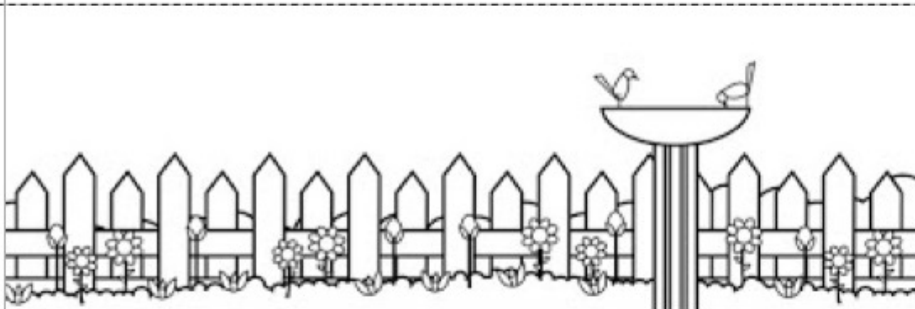
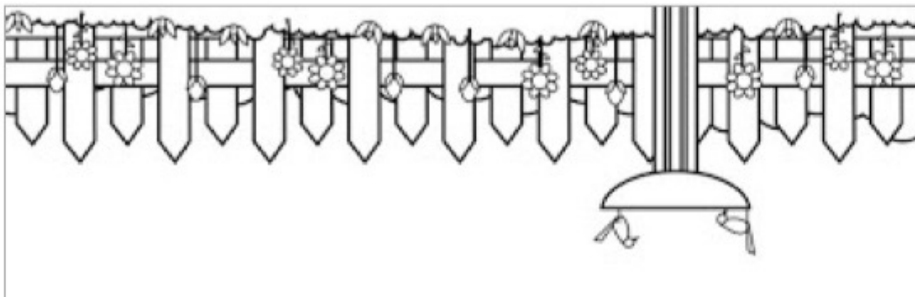
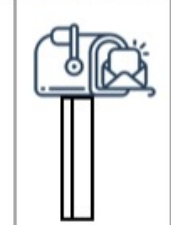
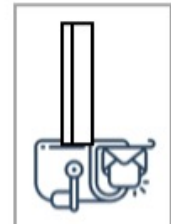
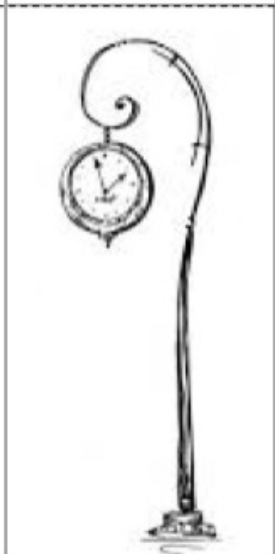
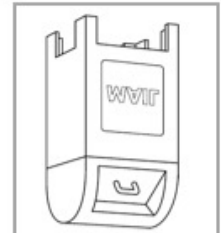
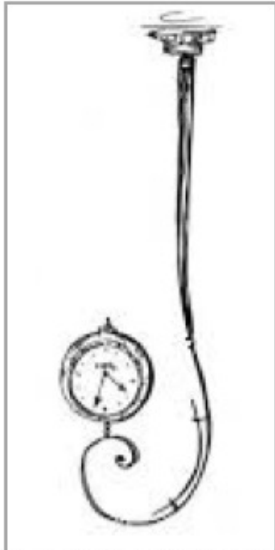
This is the floor of the house.

Example 1: Things you can include around a basic house

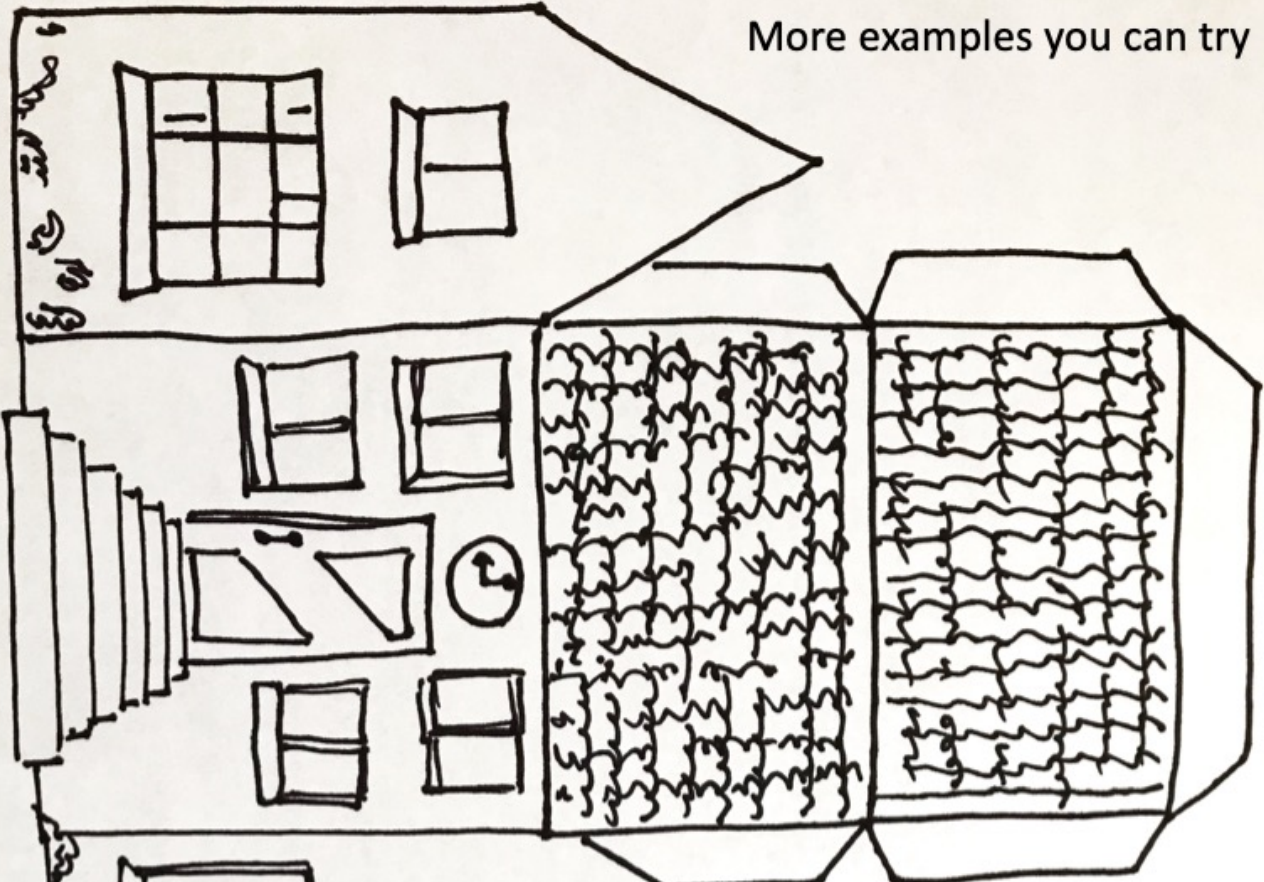


You can find more ideas at:
<http://madebyjoel.com>

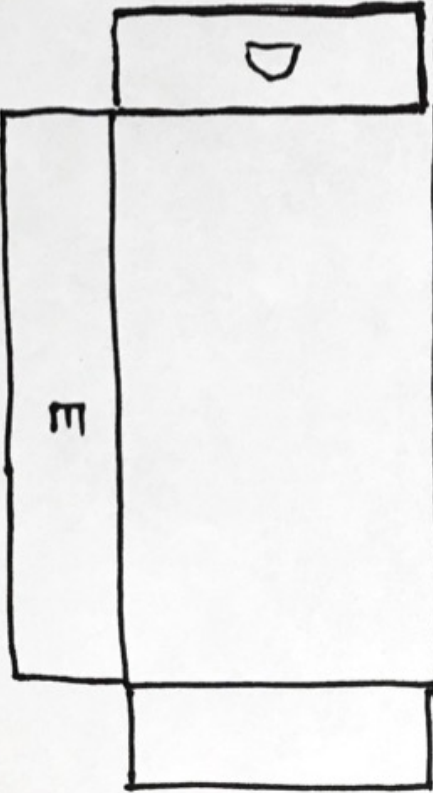
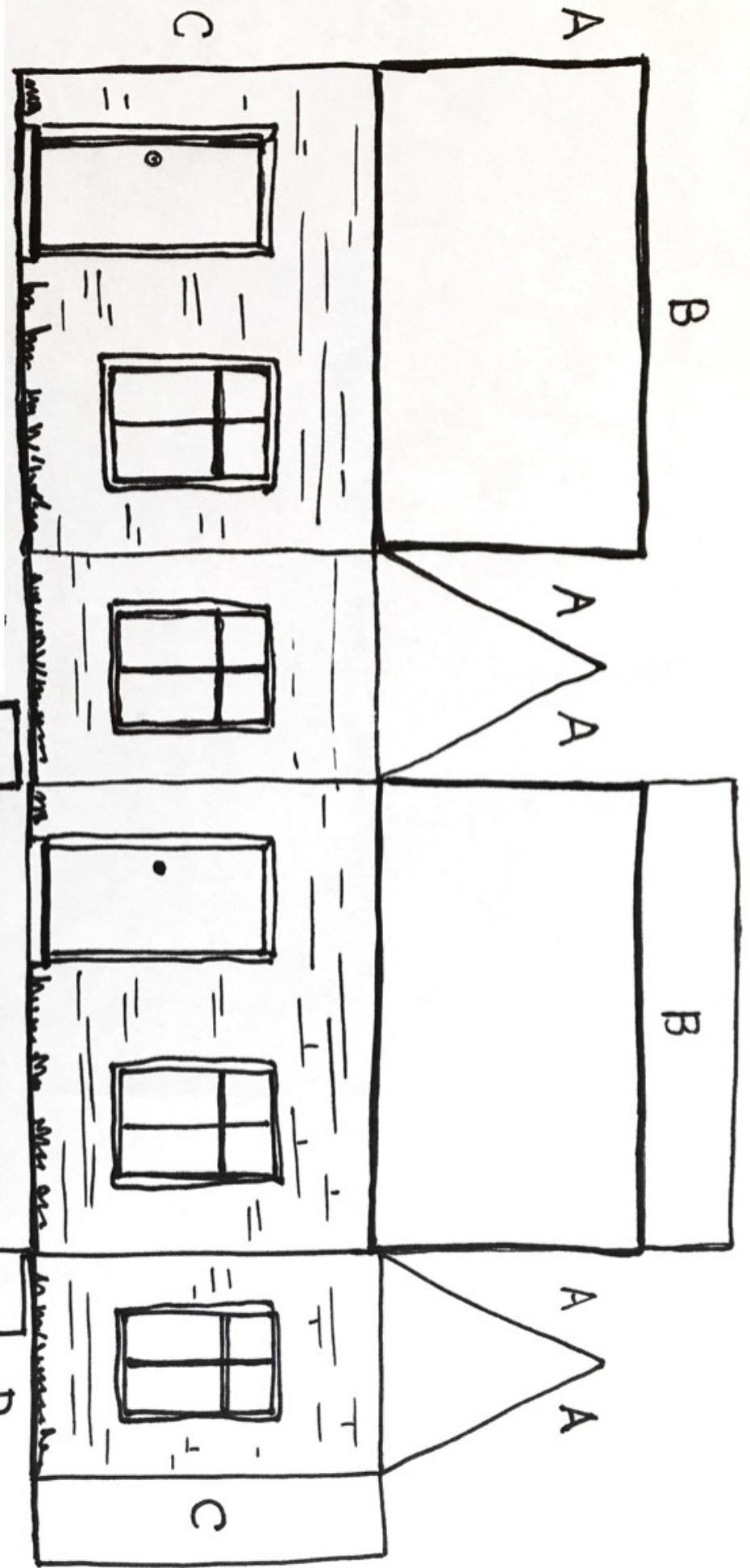
Example 1: Other things you can include around a basic house or town



More examples you can try

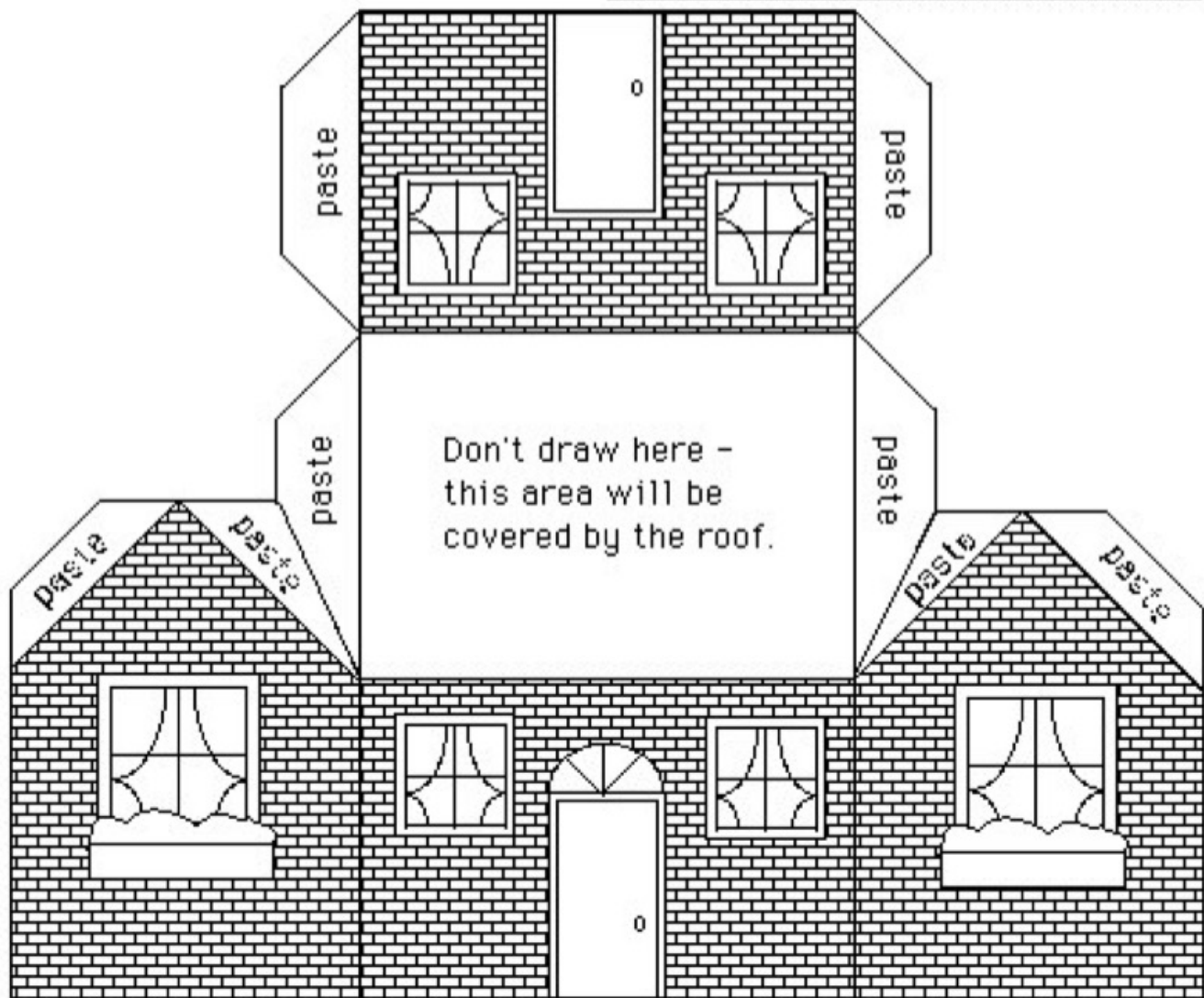
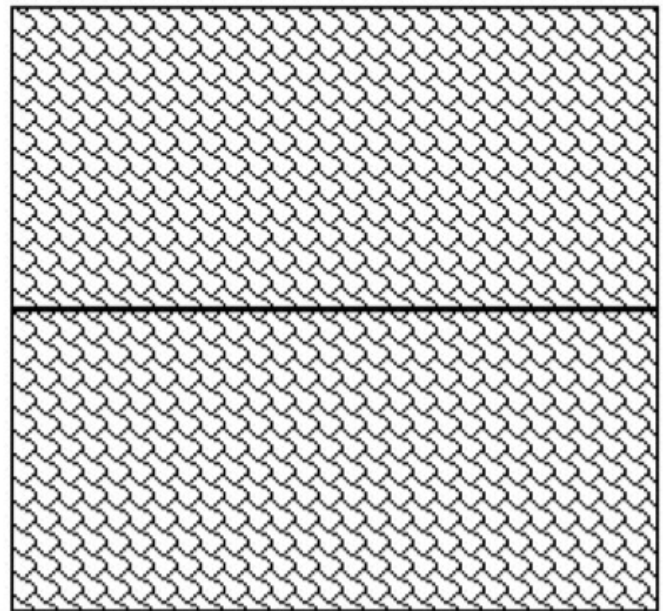


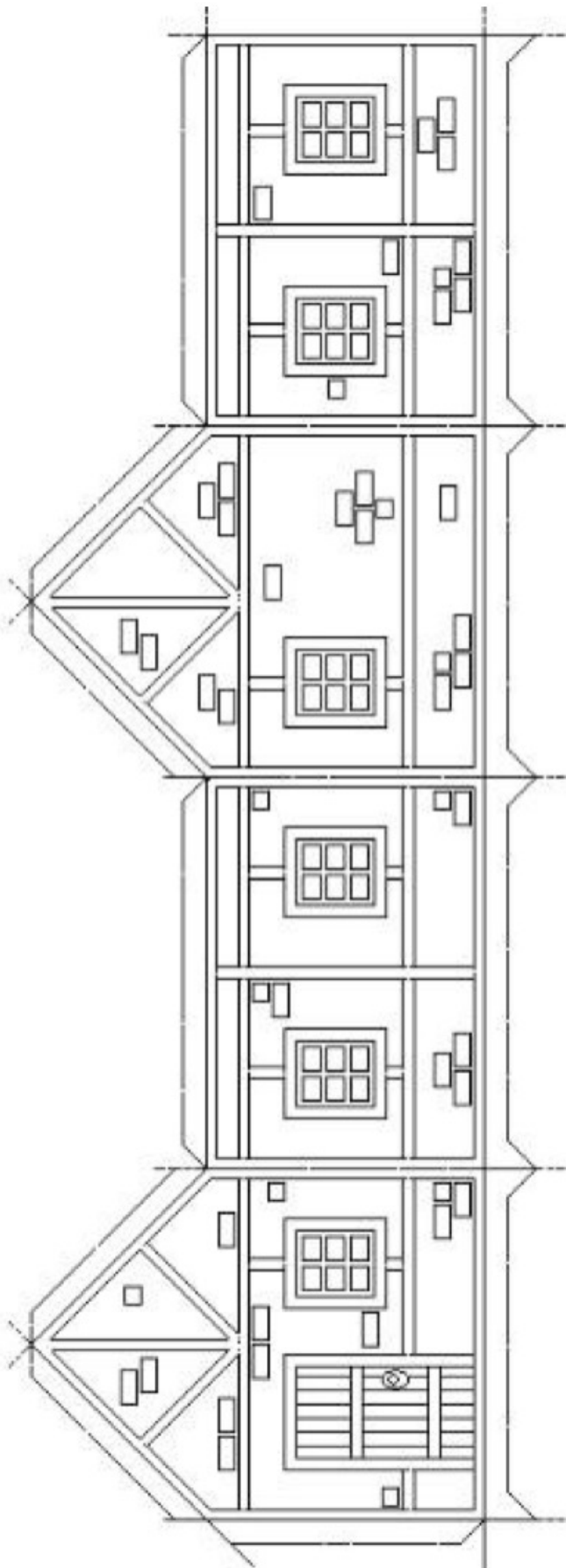
More examples you can try



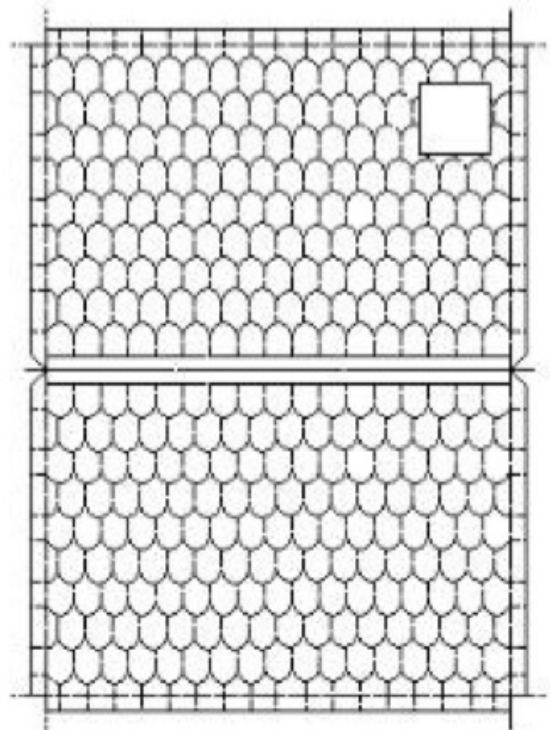
Print a Paper House

- Color the house and roof.
- Cut along the edges.
- Fold along the solid lines and along each flap.
- Paste the flaps and connect to form the house.





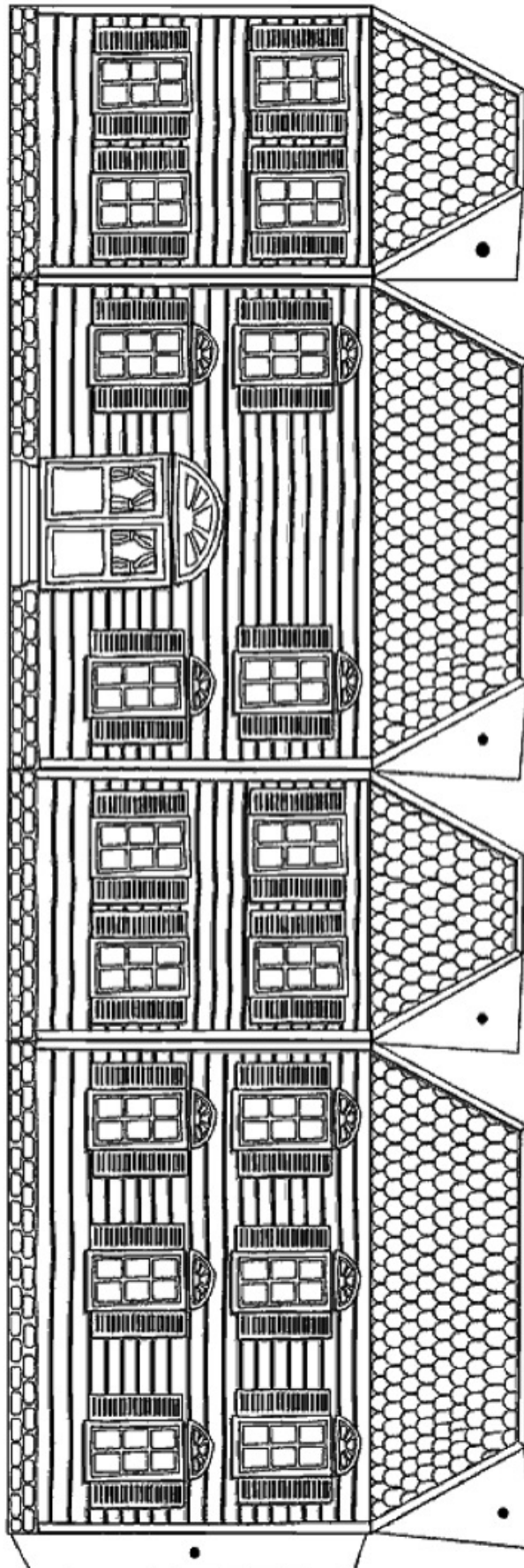
More examples you can try



This one is more difficult – but could be fun!

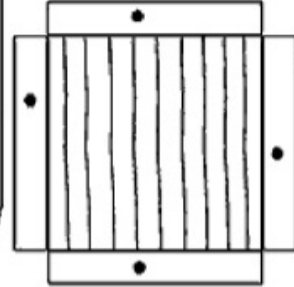
Ben & Jerry's Victorian House

- Cut out along outer edges.
- Fold on black lines.
- Fold tabs under and glue on black dots.

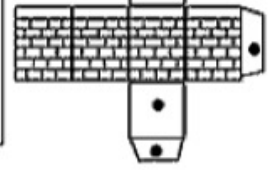


Main House
& Roof

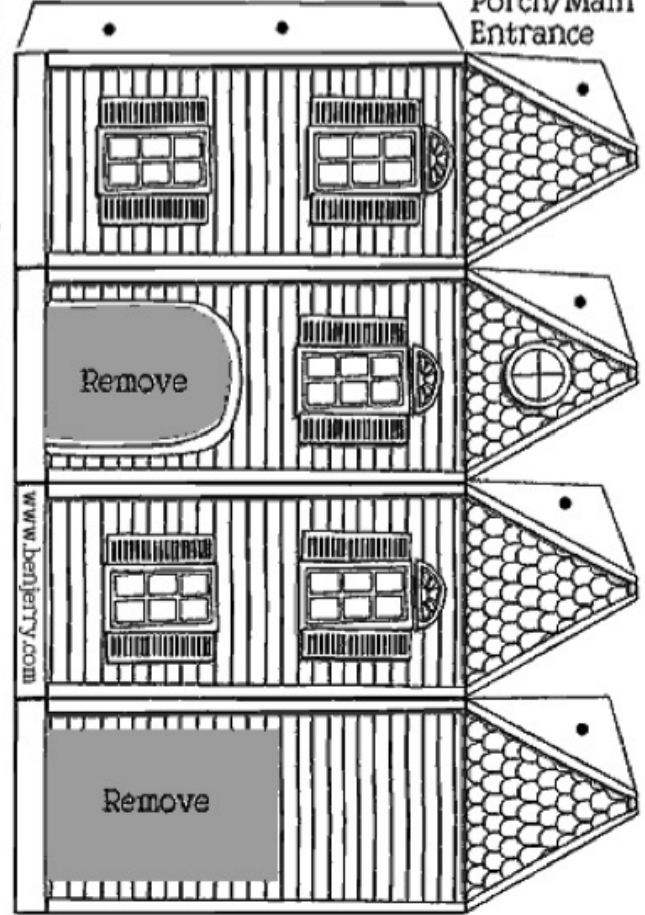
Porch floor



Chimney



Porch/Main
Entrance

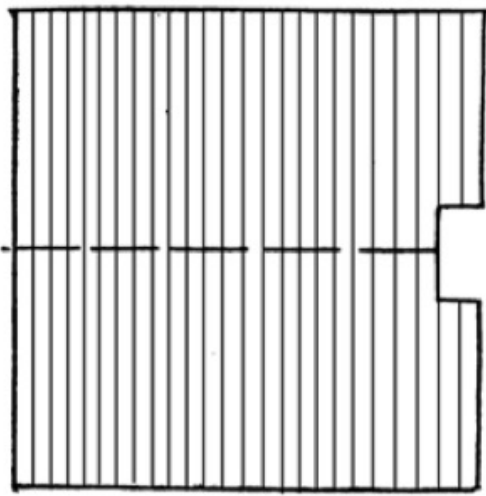


© Ben & Jerry's Homemade, Inc.

www.benjerry.com

Remove

Remove



Log house with outside chimney

Cut on full lines.

Fold on dash lines.

Paste laps.

Color to represent logs and stone.

Use colored crayon or water colors.

