

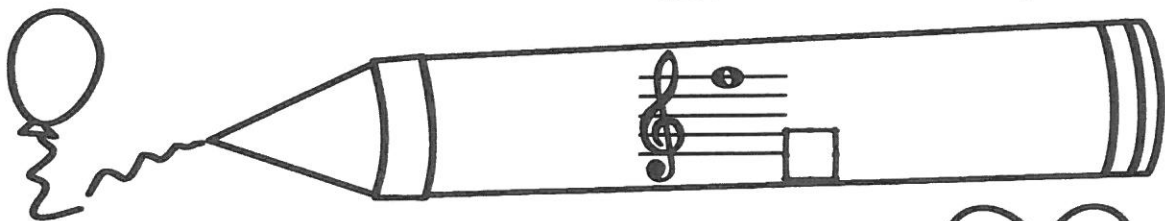
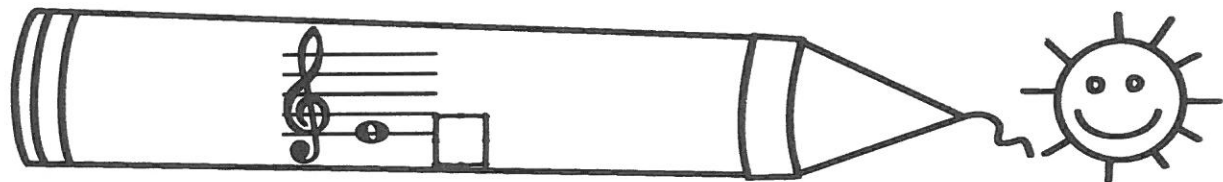
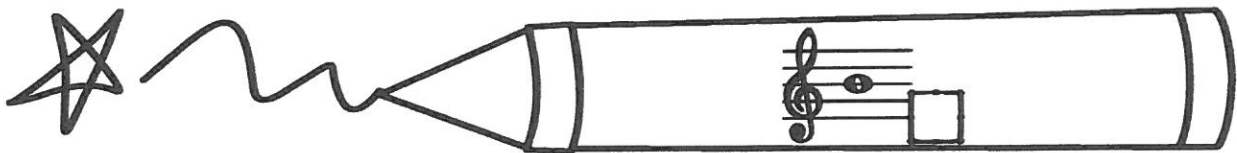
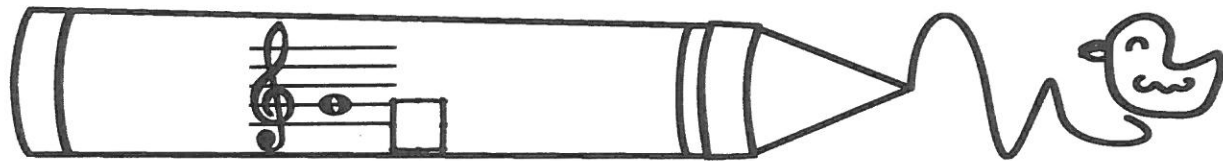
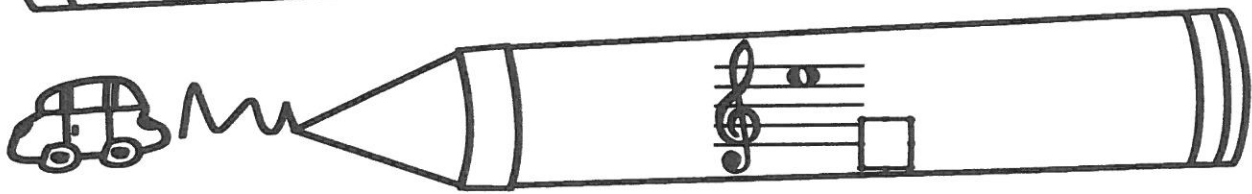
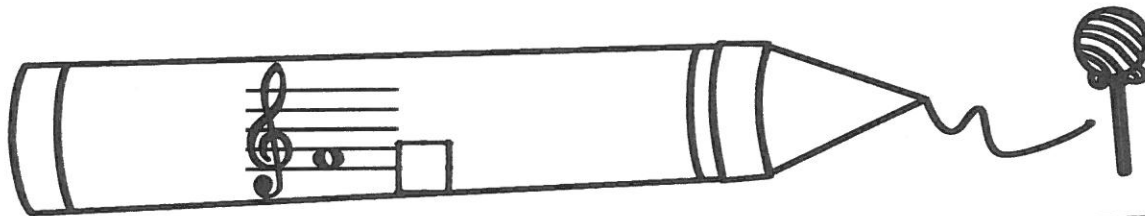
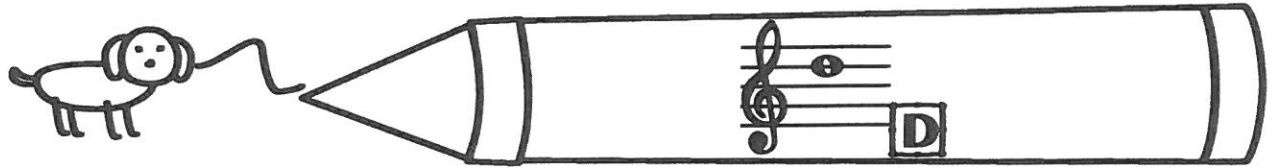
Identify the Pitch

Directions:

Name _____

IDENTIFY THE PITCH ON EACH STAFF.

WRITE YOUR ANSWER UNDER EACH STAFF.



Match it!

Directions:

Name _____

MATCH THE NOTES TO THE CORRECT LETTERS.

Six musical staves are arranged vertically on the left side of the page. Each staff contains a treble clef, a key signature of one flat (B-flat), and a series of notes. A small star marker is placed at the end of each staff. The notes on the staves are: Staff 1: G4, Bb4, G4; Staff 2: Bb4, G4, Bb4; Staff 3: Bb4, G4, Bb4; Staff 4: Bb4, G4, Bb4; Staff 5: Bb4, G4, Bb4; Staff 6: Bb4, G4, Bb4.

